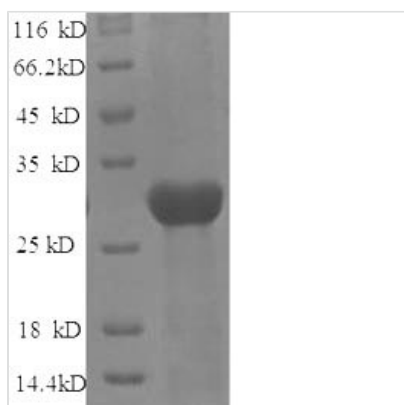




Recombinant Rat Protein-lysine 6-oxidase (Lox)

Product Code	CSB-EP013038RA
Relevance	Responsible for the post-translational oxidative deamination of peptidyl lysine residues in precursors to fibrous collagen and elastin.
Abbreviation	Recombinant Rat Lox protein
Storage	The shelf life is related to many factors, storage state, buffer ingredients, storage temperature and the stability of the protein itself. Generally, the shelf life of liquid form is 6 months at -20°C/-80°C. The shelf life of lyophilized form is 12 months at -20°C/-80°C.
Uniprot No.	P16636
Alias	Lysyl oxidase
Product Type	Recombinant Protein
Immunogen Species	Rattus norvegicus (Rat)
Purity	Greater than 90% as determined by SDS-PAGE.
Sequence	DDPYNPYKYSDDNPYNYDYTYERPRSGSRHRPGYGTGYFQYGLPDLVPDP YYIQASTYVQKMSMYNLRCAAEEENCLASSAYRADVRDYDHRVLLRFPQRVKN QGTSDFLPSRPRYSWEWHSCHQHYHSMDEFSHYDLLDASTQRRVAEGHKAS FCLEDTSCDYGYHRRFACTAHTQGLSPGCYDTYAADIDCQWIDITDVQPGNYI LKVSVNPSYLVPESDYSNNVVRCEIRYTGHHAYASGCTISPY
Research Area	Others
Source	E.coli
Target Names	Lox
Expression Region	163-411aa
Notes	Repeated freezing and thawing is not recommended. Store working aliquots at 4°C for up to one week.
Tag Info	N-terminal 6xHis-tagged
Mol. Weight	33.0kDa
Protein Length	Full Length of Mature Protein

Image



(Tris-Glycine gel) Discontinuous SDS-PAGE (reduced) with 5% enrichment gel and 15% separation gel.



Reconstitution

We recommend that this vial be briefly centrifuged prior to opening to bring the contents to the bottom. Please reconstitute protein in deionized sterile water to a concentration of 0.1-1.0 mg/mL. We recommend to add 5-50% of glycerol (final concentration) and aliquot for long-term storage at -20°C/-80°C. Our default final concentration of glycerol is 50%. Customers could use it as reference.

Shelf Life

The shelf life is related to many factors, storage state, buffer ingredients, storage temperature and the stability of the protein itself. Generally, the shelf life of liquid form is 6 months at -20°C/-80°C. The shelf life of lyophilized form is 12 months at -20°C/-80°C.