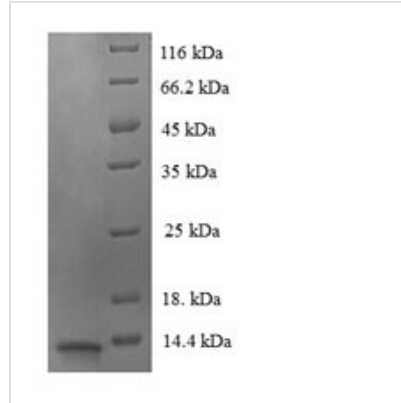




Recombinant Human Luc7-like protein 3 (LUC7L3), partial

Product Code	CSB-EP530965HU
Relevance	Binds cAMP regulatory element DNA sequence. May play a role in RNA splicing.
Abbreviation	Recombinant Human LUC7L3 protein, partial
Storage	The shelf life is related to many factors, storage state, buffer ingredients, storage temperature and the stability of the protein itself. Generally, the shelf life of liquid form is 6 months at -20°C/-80°C. The shelf life of lyophilized form is 12 months at -20°C/-80°C.
Uniprot No.	O95232
Alias	Cisplatin resistance-associated-overexpressed protein;Luc7AOkadaic acid-inducible phosphoprotein OA48-18cAMP regulatory element-associated protein 1 ;CRE-associated protein 1 ;CREAP-1
Product Type	Recombinant Protein
Immunogen Species	Homo sapiens (Human)
Purity	≥ 90% as determined by SDS-PAGE.
Sequence	MISAAQLLDELMGRDRNLAPDEKRSNVRWDHESVCKYYLFCGFCPAELFTNTR SDLGPCEKIH DENLRKQYEKSSRFMKV
Research Area	Epigenetics and Nuclear Signaling
Source	E.coli
Target Names	LUC7L3
Expression Region	1-79aa
Notes	Repeated freezing and thawing is not recommended. Store working aliquots at 4°C for up to one week.
Tag Info	N-terminal 6xHis-tagged
Mol. Weight	13.3kDa
Protein Length	Partial
Image	



(Tris-Glycine gel) Discontinuous SDS-PAGE (reduced) with 5% enrichment gel and 15% separation gel.

Reconstitution

We recommend that this vial be briefly centrifuged prior to opening to bring the contents to the bottom. Please reconstitute protein in deionized sterile water to a concentration of 0.1-1.0 mg/mL. We recommend to add 5-50% of glycerol (final concentration) and aliquot for long-term storage at $-20^{\circ}\text{C}/-80^{\circ}\text{C}$. Our default final concentration of glycerol is 50%. Customers could use it as reference.

Shelf Life

The shelf life is related to many factors, storage state, buffer ingredients, storage temperature and the stability of the protein itself. Generally, the shelf life of liquid form is 6 months at $-20^{\circ}\text{C}/-80^{\circ}\text{C}$. The shelf life of lyophilized form is 12 months at $-20^{\circ}\text{C}/-80^{\circ}\text{C}$.