

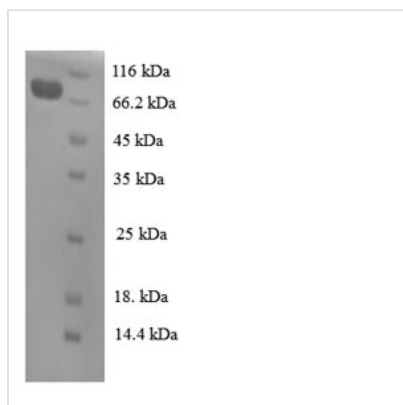


Recombinant Human Cell division cycle protein 23 homolog (CDC23), partial

Product Code	CSB-EP891530HU
Relevance	Component of the anaphase promoting complex/cyclosome (APC/C), a cell cycle-regulated E3 ubiquitin ligase that controls progression through mitosis and the G1 phase of the cell cycle. The APC/C complex acts by mediating ubiquitination and subsequent degradation of target proteins: it mainly mediates the formation of 'Lys-11'-linked polyubiquitin chains and, to a lower extent, the formation of 'Lys-48'- and 'Lys-63'-linked polyubiquitin chains.
Abbreviation	Recombinant Human CDC23 protein, partial
Storage	The shelf life is related to many factors, storage state, buffer ingredients, storage temperature and the stability of the protein itself. Generally, the shelf life of liquid form is 6 months at -20°C/-80°C. The shelf life of lyophilized form is 12 months at -20°C/-80°C.
Uniprot No.	Q9UJX2
Product Type	Recombinant Proteins
Immunogen Species	Homo sapiens (Human)
Purity	≥ 90% as determined by SDS-PAGE.
Sequence	AAVAPVLSINSDFSDLREIKKQLLLIAGLTRERGLLHSSKWSAELAFSLPALPLA ELQPPPPITEEDAQDMDAYTLAKAYFDVKEYDRAAHFLHGCNSKKAYFLYMYS RYLSGEKKKDDDETVDLSLGPLEKGQVKNEALRELVELSKKHQARELDGFGLYL YGVVLRKLDLVKEAIDVFVEATHVLPPLHWGAWLELCNLITDKEMLKFLSLPDTW MKEFFLAHIYTELQLIEEALQKYQNLIDVGFSKSSYIVSQIAVAYHNRDIDKALSI FNELRKQDPYRIENMDTFSNLLYVRSMKSELSYLAHNLCEIDKYRVETCCVIGN YYSLRSQHEKAALYFQRALKLNPRYLGAWTLMGHEYMEMKNTSAAIQAYRHAI EVNKRDRYAWYGLGQTYEILKMPFYCLYYRRAHQLRPNDSRMLVALGECYE KLNQLVEAKKCYWRAYAVGDVEKMALVKLAKLHEQLTESEQAAQCYIKYIQDI YSCGEIVEHLEESTAFRYLAQYYFKCKLWDEASTCAQKCCAFNDTREEGKALL RQILQLRNQGETPTTEVPAPFFLPASLSANNTPTRRV SPLN
Research Area	Cell Cycle
Source	E.coli
Target Names	CDC23
Expression Region	20-597aa
Notes	Repeated freezing and thawing is not recommended. Store working aliquots at 4°C for up to one week.
Tag Info	N-terminal 6xHis-tagged
Mol. Weight	71.0kDa
Protein Length	Partial



Image



(Tris-Glycine gel) Discontinuous SDS-PAGE (reduced) with 5% enrichment gel and 15% separation gel.

Shelf Life

The shelf life is related to many factors, storage state, buffer ingredients, storage temperature and the stability of the protein itself.

Generally, the shelf life of liquid form is 6 months at $-20^{\circ}\text{C}/-80^{\circ}\text{C}$. The shelf life of lyophilized form is 12 months at $-20^{\circ}\text{C}/-80^{\circ}\text{C}$.