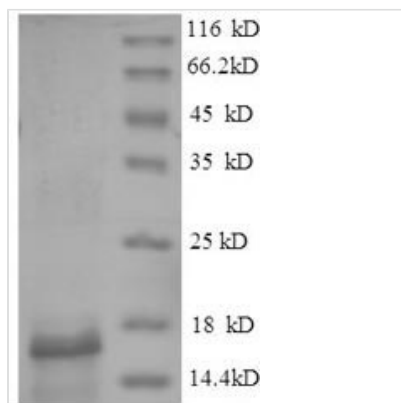




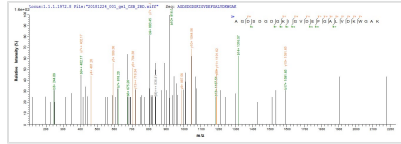
Recombinant *Gadus morhua* subsp. *callarias* Parvalbumin beta

Product Code	CSB-EP365766GAA
Relevance	In muscle, parvalbumin is thought to be involved in relaxation after contraction. It binds two calcium ions.
Abbreviation	Recombinant <i>Gadus morhua</i> subsp. <i>callarias</i> Parvalbumin beta protein
Storage	The shelf life is related to many factors, storage state, buffer ingredients, storage temperature and the stability of the protein itself. Generally, the shelf life of liquid form is 6 months at -20°C/-80°C. The shelf life of lyophilized form is 12 months at -20°C/-80°C.
Uniprot No.	P02622
Product Type	Recombinant Protein
Immunogen Species	<i>Gadus morhua</i> subsp. <i>callarias</i> (Baltic cod) (<i>Gadus callarias</i>)
Purity	≥ 90% as determined by SDS-PAGE.
Sequence	AFKGILSNADIKAAEAACFKEGSFDEEDGFYAKVGLDAFSADELKCLKFKIADEDK EGFIEEDELKFLIAFAADLRALTD AETKAFKAGDSGDGKIGVDEFGALVDK WGAKG
Research Area	Others
Source	E.coli
Expression Region	1-113aa
Notes	Repeated freezing and thawing is not recommended. Store working aliquots at 4°C for up to one week.
Tag Info	N-terminal 6xHis-tagged
Mol. Weight	16.1kDa
Protein Length	Full Length

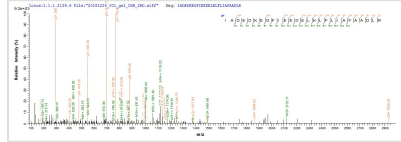
Image



(Tris-Glycine gel) Discontinuous SDS-PAGE (reduced) with 5% enrichment gel and 15% separation gel.



Based on the SEQUEST from database of E.coli host and target protein, the LC-MS/MS Analysis result of CSB-EP365766GAA could indicate that this peptide derived from E.coli-expressed *Gadus morhua* subsp. *callarias* (Baltic cod) (*Gadus callarias*) N/A.



Based on the SEQUEST from database of E.coli host and target protein, the LC-MS/MS Analysis result of CSB-EP365766GAA could indicate that this peptide derived from E.coli-expressed *Gadus morhua* subsp. *callarias* (Baltic cod) (*Gadus callarias*) N/A.

Reconstitution

We recommend that this vial be briefly centrifuged prior to opening to bring the contents to the bottom. Please reconstitute protein in deionized sterile water to a concentration of 0.1-1.0 mg/mL. We recommend to add 5-50% of glycerol (final concentration) and aliquot for long-term storage at -20°C/-80°C. Our default final concentration of glycerol is 50%. Customers could use it as reference.

Shelf Life

The shelf life is related to many factors, storage state, buffer ingredients, storage temperature and the stability of the protein itself. Generally, the shelf life of liquid form is 6 months at -20°C/-80°C. The shelf life of lyophilized form is 12 months at -20°C/-80°C.