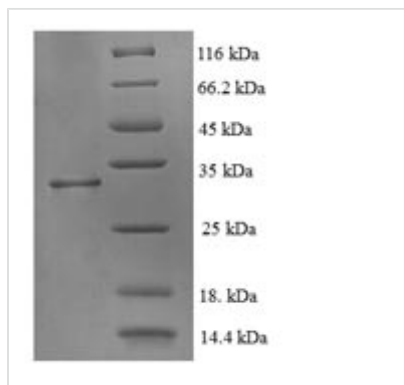




Recombinant Human ATP synthase mitochondrial F1 complex assembly factor 2 (ATPAF2)

Product Code	CSB-EP002425HU
Relevance	May play a role in the assembly of the F1 component of the mitochondrial ATP synthase (ATPase).
Abbreviation	Recombinant Human ATPAF2 protein
Storage	The shelf life is related to many factors, storage state, buffer ingredients, storage temperature and the stability of the protein itself. Generally, the shelf life of liquid form is 6 months at -20°C/-80°C. The shelf life of lyophilized form is 12 months at -20°C/-80°C.
Uniprot No.	Q8N5M1
Alias	ATP12 homolog
Product Type	Recombinant Protein
Immunogen Species	Homo sapiens (Human)
Purity	≥ 90% as determined by SDS-PAGE.
Sequence	APPTERKRFYQNVISITQGEGGF EINLDHRK LKTPQAKLFTVPSEALAI AVATEW DSQQDTIKYYTMHLTTL CNTSLDNPTQRNKDQLIRAAVKFLD TDTICYRVEEPE TLVELQRNEWDPIIEWAEKRYGVEISSSTSIMGPSIPAKTREV LVSHLASYN TW ALQGIEFVAAQLKSMVLT LGLIDLRLTVEQAVLLSRLEEEYQIQKWGNIEWAHD YELQELRARTAAGTLFIHLCSESTTVKHKLLKE
Research Area	Metabolism
Source	E.coli
Target Names	ATPAF2
Expression Region	41-289aa
Notes	Repeated freezing and thawing is not recommended. Store working aliquots at 4°C for up to one week.
Tag Info	N-terminal 6xHis-tagged
Mol. Weight	32.5kDa
Protein Length	Full Length of Mature Protein
Image	



(Tris-Glycine gel) Discontinuous SDS-PAGE (reduced) with 5% enrichment gel and 15% separation gel.

Reconstitution

We recommend that this vial be briefly centrifuged prior to opening to bring the contents to the bottom. Please reconstitute protein in deionized sterile water to a concentration of 0.1-1.0 mg/mL. We recommend to add 5-50% of glycerol (final concentration) and aliquot for long-term storage at -20°C/-80°C. Our default final concentration of glycerol is 50%. Customers could use it as reference.

Shelf Life

The shelf life is related to many factors, storage state, buffer ingredients, storage temperature and the stability of the protein itself. Generally, the shelf life of liquid form is 6 months at -20°C/-80°C. The shelf life of lyophilized form is 12 months at -20°C/-80°C.