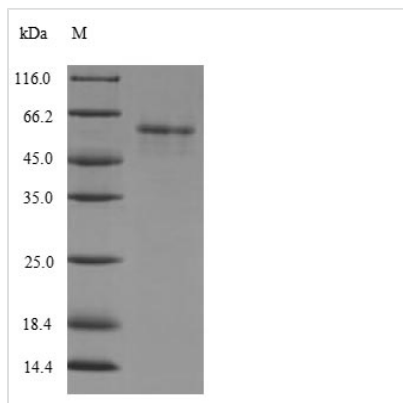




Recombinant Human [Pyruvate dehydrogenase [acetyl-transferring]]-phosphatase 2, mitochondrial (PDP2)

Product Code	CSB-EP868395HU
Relevance	Catalyzes the dephosphorylation and concomitant reactivation of the alpha subunit of the E1 component of the pyruvate dehydrogenase complex.
Abbreviation	Recombinant Human PDP2 protein
Storage	The shelf life is related to many factors, storage state, buffer ingredients, storage temperature and the stability of the protein itself. Generally, the shelf life of liquid form is 6 months at -20°C/-80°C. The shelf life of lyophilized form is 12 months at -20°C/-80°C.
Uniprot No.	Q9P2J9
Alias	Pyruvate dehydrogenase phosphatase catalytic subunit 2 ;PDPC 2
Product Type	Recombinant Protein
Immunogen Species	Homo sapiens (Human)
Purity	≥ 90% as determined by SDS-PAGE.
Sequence	STEEDDFHLQLSPEQINEVLRAGETTHKILDLESRVNSVLRFESNQLAANSPV EDRRGVASCLQTNGLMFGIFDGHGGHACAQAVSERLFYYVAVSLMSHQBLEH MEGAMESMKPLLILHWLKHGPGDSIYKDVTSVHLDHLRVYWQELLDLHMEMG LSIEEALMYSFQRLDSDISLEIQAPLEDEVTRNLSLQVAFSGATACMAHVVDGIHL HVANAGDCRAILGVQEDNGMWSCPLTRDHNAWNQAELSRLKREHPESEDR TIIMEDRLLGVLPICRAFQDVQLKWSKELQRSILERGFNTEALNIYQFTPPHYTT PPYLTAPEPEVYHRLRPQDKFLVLASDGLWDMLSNEDVVRLVVGHLAEADWH KTDLAQRPANLGLMQSLLLQRKASGLHEADQNAATRLIRHAIGNNEYGEMAE RLAAMLTLPEDLARMYRDDITVTVVYFNSESIGAYYKGG
Research Area	Metabolism
Source	E.coli
Target Names	PDP2
Expression Region	67-529aa
Notes	Repeated freezing and thawing is not recommended. Store working aliquots at 4°C for up to one week.
Tag Info	N-terminal 6xHis-tagged
Mol. Weight	56.4kDa
Protein Length	Full Length of Mature Protein
Image	



(Tris-Glycine gel) Discontinuous SDS-PAGE (reduced) with 5% enrichment gel and 15% separation gel.

Reconstitution

We recommend that this vial be briefly centrifuged prior to opening to bring the contents to the bottom. Please reconstitute protein in deionized sterile water to a concentration of 0.1-1.0 mg/mL. We recommend to add 5-50% of glycerol (final concentration) and aliquot for long-term storage at -20°C/-80°C. Our default final concentration of glycerol is 50%. Customers could use it as reference.

Shelf Life

The shelf life is related to many factors, storage state, buffer ingredients, storage temperature and the stability of the protein itself. Generally, the shelf life of liquid form is 6 months at -20°C/-80°C. The shelf life of lyophilized form is 12 months at -20°C/-80°C.