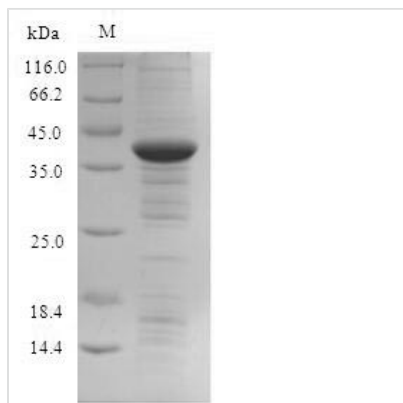




Recombinant Human Indolethylamine N-methyltransferase (INMT)

| | |
|--------------------------|--|
| Product Code | CSB-EP011723HU |
| Relevance | Functions as thioether S-methyltransferase and is active with a variety of thioethers and the corresponding selenium and tellurium compounds, including 3-methylthiopropionaldehyde, dimethyl selenide, dimethyl telluride, 2-methylthioethylamine, 2-methylthioethanol, methyl-n-propyl sulfide and diethyl sulfide. Plays an important role in the detoxification of selenium compounds . Catalyzes the N-methylation of tryptamine and structurally related compounds.1 Publication |
| Abbreviation | Recombinant Human INMT protein |
| Storage | The shelf life is related to many factors, storage state, buffer ingredients, storage temperature and the stability of the protein itself. Generally, the shelf life of liquid form is 6 months at -20°C/-80°C. The shelf life of lyophilized form is 12 months at -20°C/-80°C. |
| Uniprot No. | O95050 |
| Alias | Aromatic alkylamine N-methyltransferase ;Amine N-methyltransferase ;Arylamine N-methyltransferaseThioether S-methyltransferase ;TEMT |
| Product Type | Recombinant Protein |
| Immunogen Species | Homo sapiens (Human) |
| Purity | ≥ 90% as determined by SDS-PAGE. |
| Sequence | MKGGFTGGDEYQKHFLPRDYLATYYSF DGSPSPEAEMLKFNLECLHKTFGPG GLQGDTLIDIGSGPTIYQVLAACDSFQDITLSDF TDRNREELEKWLKKEPGAYD WTPAVKFACELEGNSGRWEEKKELRAAVKRVLKCDVHLGNPLAPAVLPLAD CVLTLLAMECACCSLDAYRAALCNLASLLKPGGHLVTTVTLRLPSYMGKREF SCVALEKEEVEQAVLDAGFDIEQLLHSPQSYSVTNAANNGVCFIVARKKPGP |
| Research Area | Metabolism |
| Source | E.coli |
| Target Names | INMT |
| Expression Region | 1-263aa |
| Notes | Repeated freezing and thawing is not recommended. Store working aliquots at 4°C for up to one week. |
| Tag Info | N-terminal 6xHis-SUMO-tagged |
| Mol. Weight | 44.9kDa |
| Protein Length | Full Length |
| Image | |



(Tris-Glycine gel) Discontinuous SDS-PAGE (reduced) with 5% enrichment gel and 15% separation gel.

Reconstitution

We recommend that this vial be briefly centrifuged prior to opening to bring the contents to the bottom. Please reconstitute protein in deionized sterile water to a concentration of 0.1-1.0 mg/mL. We recommend to add 5-50% of glycerol (final concentration) and aliquot for long-term storage at -20°C/-80°C. Our default final concentration of glycerol is 50%. Customers could use it as reference.

Shelf Life

The shelf life is related to many factors, storage state, buffer ingredients, storage temperature and the stability of the protein itself. Generally, the shelf life of liquid form is 6 months at -20°C/-80°C. The shelf life of lyophilized form is 12 months at -20°C/-80°C.