

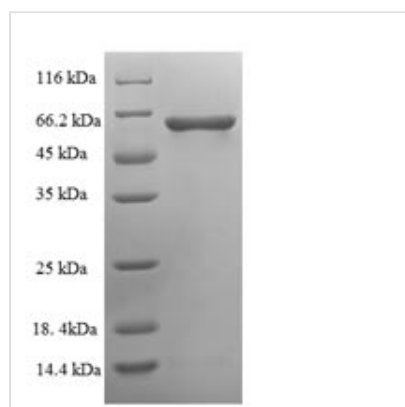


Recombinant Human Serine/threonine-protein phosphatase 2B catalytic subunit gamma isoform (PPP3CC), partial

Product Code	CSB-EP018574HU
Relevance	Calcium-dependent, calmodulin-stimulated protein phosphatase. This subunit may have a role in the calmodulin activation of calcineurin.
Abbreviation	Recombinant Human PPP3CC protein, partial
Storage	The shelf life is related to many factors, storage state, buffer ingredients, storage temperature and the stability of the protein itself. Generally, the shelf life of liquid form is 6 months at -20°C/-80°C. The shelf life of lyophilized form is 12 months at -20°C/-80°C.
Uniprot No.	P48454
Alias	CAM-PRP catalytic subunitCalcineurin, testis-specific catalytic subunitCalmodulin-dependent calcineurin A subunit gamma isoform
Product Type	Recombinant Protein
Immunogen Species	Homo sapiens (Human)
Purity	≥ 90% as determined by SDS-PAGE.
Sequence	SGRRFHLSTTDRVIKAVFPPTQRLTFKEVFENGKPKVDVLKNHLVKEGRLEE EVALKIINDGAILRQEKTMI EVDAPITVCGDIHGQFFDLMKLFEVGGSPSNT RYLFLGDYVDRGYFSIECVLYLWLSLKINHPKTLFLLRGNHECRHLTDYFTFKQECR IKYSEQVYDACMETFDCLPLAALLNQQFLCVHGGMSPEITSLDDIRKLD RFTEP PAFGPVCDLLWSDPSEDYGNEKTLEHYTHNTVRGCSYFYSYPAVCEFLQNN LLSIIRAHEAQDAGYRMYRKSQATGFPSLITIFSAPNYLDVYNNKAAVLKYENNV MNIRQFNCSHPYWLPNFMDVFTWVSLPFVGEKVTEMLVNVLNICSDDELISDD EAEGSTTVRKEIIRNKIRAIGKMARVFSILRQESESVLTLKGLTPTGTPLPLGVLSG GKQTIETATVEAVEAREAIRGFSLQHKIRSFEEARGLDRINERMPPRKDSIHAG GPMKSVTSAHSHAAHRSDQGKKAHS
Research Area	Signal Transduction
Source	E.coli
Target Names	PPP3CC
Expression Region	2-512aa
Notes	Repeated freezing and thawing is not recommended. Store working aliquots at 4°C for up to one week.
Tag Info	N-terminal 6xHis-tagged
Mol. Weight	62.0kDa
Protein Length	Partial



Image



(Tris-Glycine gel) Discontinuous SDS-PAGE (reduced) with 5% enrichment gel and 15% separation gel.

Reconstitution

We recommend that this vial be briefly centrifuged prior to opening to bring the contents to the bottom. Please reconstitute protein in deionized sterile water to a concentration of 0.1-1.0 mg/mL. We recommend to add 5-50% of glycerol (final concentration) and aliquot for long-term storage at -20°C/-80°C. Our default final concentration of glycerol is 50%. Customers could use it as reference.

Shelf Life

The shelf life is related to many factors, storage state, buffer ingredients, storage temperature and the stability of the protein itself. Generally, the shelf life of liquid form is 6 months at -20°C/-80°C. The shelf life of lyophilized form is 12 months at -20°C/-80°C.