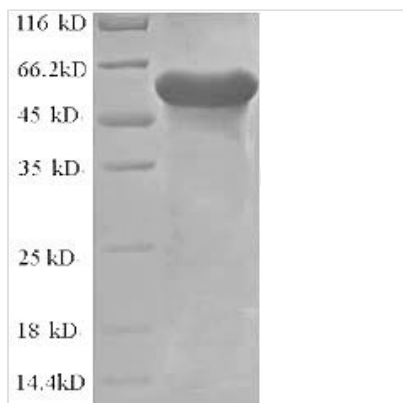




Recombinant Lactobacillus plantarum L-lactate dehydrogenase 1 (ldh1)

Product Code	CSB-EP348716LMS
Abbreviation	Recombinant Lactobacillus plantarum ldh1 protein
Storage	The shelf life is related to many factors, storage state, buffer ingredients, storage temperature and the stability of the protein itself. Generally, the shelf life of liquid form is 6 months at -20°C/-80°C. The shelf life of lyophilized form is 12 months at -20°C/-80°C.
Uniprot No.	P56512
Product Type	Recombinant Protein
Immunogen Species	Lactobacillus plantarum (strain ATCC BAA-793 / NCIMB 8826 / WCFS1)
Purity	≥ 90% as determined by SDS-PAGE.
Sequence	MSSMPNHQKVVLVGDGAVGSSYAFAMAQQGIAEEFVIVDVVKDRTKGDALDL EDAQAFTAPKKIYSGEYS DCKDADLVVITAGAPQKPGESRLDLVNKNLNILSSIV KPVVDSGFDGIFLVAANPVDILTYATWKFSGFKDRVIGSGTSLDSSRLRVALG KQFNVDPRSVDAYIMGEHGDSEFAAYSTATIGTRPVRDVAKEQGVSDIDLAKL EDGVRNKAYDIINLKGATFYGIGTALMRISKAILRDENAVLPVGAYMDGQYGLN DIYIGTPAVIGGTGLKQIIESPLSADELKKMQDSAATLKKVLNDGLAELENK
Research Area	Others
Source	E.coli
Target Names	ldh1
Expression Region	1-320aa
Notes	Repeated freezing and thawing is not recommended. Store working aliquots at 4°C for up to one week.
Tag Info	N-terminal GST-tagged
Mol. Weight	61.2kDa
Protein Length	Full Length

Image



(Tris-Glycine gel) Discontinuous SDS-PAGE (reduced) with 5% enrichment gel and 15% separation gel.



Reconstitution

We recommend that this vial be briefly centrifuged prior to opening to bring the contents to the bottom. Please reconstitute protein in deionized sterile water to a concentration of 0.1-1.0 mg/mL. We recommend to add 5-50% of glycerol (final concentration) and aliquot for long-term storage at -20°C/-80°C. Our default final concentration of glycerol is 50%. Customers could use it as reference.

Shelf Life

The shelf life is related to many factors, storage state, buffer ingredients, storage temperature and the stability of the protein itself.

Generally, the shelf life of liquid form is 6 months at -20°C/-80°C. The shelf life of lyophilized form is 12 months at -20°C/-80°C.