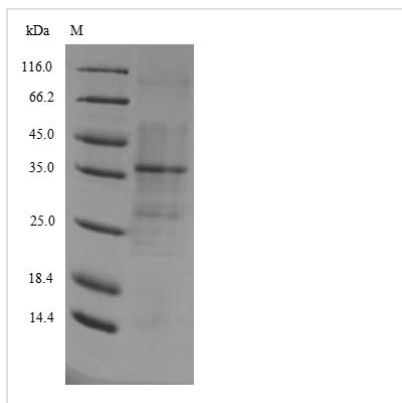




Recombinant Arabidopsis thaliana Probable WRKY transcription factor 40 (WRKY40)

Product Code	CSB-EP874370DOA
Relevance	Transcription factor. Interacts specifically with the W box (5'-(T)TGAC[CT]-3'), a frequently occurring elicitor-responsive cis-acting element.
Abbreviation	Recombinant Mouse-ear cress WRKY40 protein
Storage	The shelf life is related to many factors, storage state, buffer ingredients, storage temperature and the stability of the protein itself. Generally, the shelf life of liquid form is 6 months at -20°C/-80°C. The shelf life of lyophilized form is 12 months at -20°C/-80°C.
Uniprot No.	Q9SAH7
Alias	WRKY DNA-binding protein 40
Product Type	Recombinant Protein
Immunogen Species	Arabidopsis thaliana (Mouse-ear cress)
Purity	Greater than 90% as determined by SDS-PAGE.
Sequence	MDQYSSSLVDTSLDLTIGVTRMRVEEDPPTSALVEELNRVSAENKKLSEMLTL MCDNYNVLRKQLMEYVNKSNITERDQISPPKKRKSPAREDAFSCAVIGGVSES SSTDQDEYLCKKQREETVVKEKVSRYVYKTEASDTTLVVKDG YQWRKYGQKV TRDNPSPRAYFKCACAPSCSVK KVKRSVEDQSVLVATYEGEHNHPMPSQID SNNGLNRHISHGGSASTPVAANRRSSLTVPVTTVDMIESKKVTSPTS RIDFPQV QKLLVEQMASSLT KDPNFTAALAAAVTGKLYQQNHTEK
Research Area	Others
Source	E.coli
Target Names	WRKY40
Expression Region	1-302aa
Notes	Repeated freezing and thawing is not recommended. Store working aliquots at 4°C for up to one week.
Tag Info	N-terminal 6xHis-tagged
Mol. Weight	37.7kDa
Protein Length	Full Length
Image	



(Tris-Glycine gel) Discontinuous SDS-PAGE (reduced) with 5% enrichment gel and 15% separation gel.

Reconstitution

We recommend that this vial be briefly centrifuged prior to opening to bring the contents to the bottom. Please reconstitute protein in deionized sterile water to a concentration of 0.1-1.0 mg/mL. We recommend to add 5-50% of glycerol (final concentration) and aliquot for long-term storage at -20°C/-80°C. Our default final concentration of glycerol is 50%. Customers could use it as reference.

Shelf Life

The shelf life is related to many factors, storage state, buffer ingredients, storage temperature and the stability of the protein itself. Generally, the shelf life of liquid form is 6 months at -20°C/-80°C. The shelf life of lyophilized form is 12 months at -20°C/-80°C.