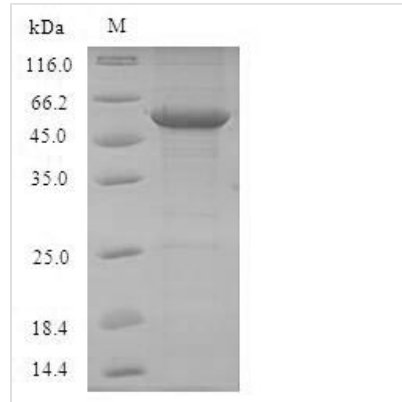




# Recombinant Mouse Toll-like receptor 7 (Tlr7), partial

<b>Product Code</b>	CSB-EP023606MO
<b>Relevance</b>	Key component of innate and adaptive immunity. TLRs (Toll-like receptors) control host immune response against pathogens through recognition of molecular patterns specific to microorganisms. TLR7 is a nucleotide-sensing TLR which is activated by single-stranded RNA. Acts via MYD88 and TRAF6, leading to NF-kappa-B activation, cytokine secretion and the inflammatory response.
<b>Abbreviation</b>	Recombinant Mouse Tlr7 protein, partial
<b>Storage</b>	The shelf life is related to many factors, storage state, buffer ingredients, storage temperature and the stability of the protein itself. Generally, the shelf life of liquid form is 6 months at -20°C/-80°C. The shelf life of lyophilized form is 12 months at -20°C/-80°C.
<b>Uniprot No.</b>	P58681
<b>Product Type</b>	Recombinant Protein
<b>Immunogen Species</b>	Mus musculus (Mouse)
<b>Purity</b>	≥ 90% as determined by SDS-PAGE.
<b>Sequence</b>	FRWFPKTLPCSEVKVNIPEAHVIVDCTDKHLTEIPEGIPTNTTTLTLINHIPSISPD SFRRNLNHLLEIDLRCNCVPLVLLGSKANVCTKRLQIRPGSFSGLSDLKALYLDGN QLLEIPQDLPSSLHLLSLEANNIFSITKENLTELVNIETLYLGQNCYRNPVNSY SIEKDAFLVMRNLKVLKLDNNVTAVPTTLPPNLELYLYNNIIKKIQENDFNNLN ELQVLDLSGNCPRCYNVPYPCPCENNSPLQIHDNAFNSLTELKVLRLHSNSL QHVPPTWFKNMRNLQELDLSQNYLAREIEEAKFLHFLPNLVELDFS
<b>Research Area</b>	Others
<b>Source</b>	E.coli
<b>Target Names</b>	Tlr7
<b>Expression Region</b>	27-348aa
<b>Notes</b>	Repeated freezing and thawing is not recommended. Store working aliquots at 4°C for up to one week.
<b>Tag Info</b>	N-terminal GST-tagged
<b>Mol. Weight</b>	63.8kDa
<b>Protein Length</b>	Partial
<b>Image</b>	



(Tris-Glycine gel) Discontinuous SDS-PAGE (reduced) with 5% enrichment gel and 15% separation gel.

### Reconstitution

We recommend that this vial be briefly centrifuged prior to opening to bring the contents to the bottom. Please reconstitute protein in deionized sterile water to a concentration of 0.1-1.0 mg/mL. We recommend to add 5-50% of glycerol (final concentration) and aliquot for long-term storage at -20°C/-80°C. Our default final concentration of glycerol is 50%. Customers could use it as reference.

### Shelf Life

The shelf life is related to many factors, storage state, buffer ingredients, storage temperature and the stability of the protein itself.

Generally, the shelf life of liquid form is 6 months at -20°C/-80°C. The shelf life of lyophilized form is 12 months at -20°C/-80°C.