

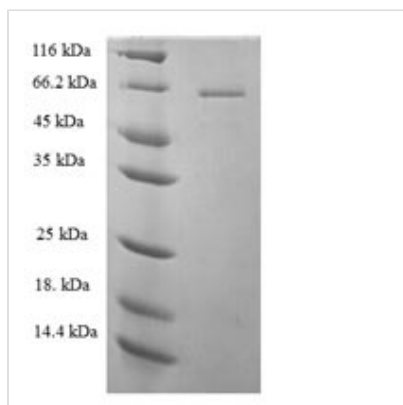


Recombinant Human 1-phosphatidylinositol 4,5-bisphosphate phosphodiesterase zeta-1 (PLCZ1)

Product Code	CSB-EP768240HU
Relevance	The production of the second messenger molecules diacylglycerol (DAG) and inositol 1,4,5-trisphosphate (IP3) is mediated by activated phosphatidylinositol-specific phospholipase C enzymes. In vitro, hydrolyzes PtdIns(4,5)P2 in a Ca ²⁺ -dependent manner. Triggers intracellular Ca ²⁺ oscillations in oocytes solely during M phase and is involved in inducing oocyte activation and initiating bryonic development up to the blastocyst stage. Is therefore a strong candidate for the egg-activating soluble sperm factor that is transferred from the sperm into the egg cytoplasm following gamete mbrane fusion. May exert an inhibitory effect on phospholipase-C-coupled processes that depend on calcium ions and protein kinase C, including CFTR trafficking and function.
Abbreviation	Recombinant Human PLCZ1 protein
Storage	The shelf life is related to many factors, storage state, buffer ingredients, storage temperature and the stability of the protein itself. Generally, the shelf life of liquid form is 6 months at -20°C/-80°C. The shelf life of lyophilized form is 12 months at -20°C/-80°C.
Uniprot No.	Q86YW0
Product Type	Recombinant Proteins
Immunogen Species	Homo sapiens (Human)
Purity	Greater than 90% as determined by SDS-PAGE.
Sequence	MEMRWFLSKIQDDFRGGKINLEKTQRLLEKLDIRCSYIHVKQIFKTSYDYPVVLSE ENHCSTAQQEVMADNLQATFGESLLSDMLDDFPDTPSPEALKFKILVKNKKIG TLKETHERKGS DKRGDNQDKETGVKKLPGVMLFKKKKTRK LKIALALS D LVIYT KAEKFKSFQHSRLYQQFNENNSIGETQARKLSKLRVHEFIFHTRKFITRIYPKAT RADSSNFNPQEFWNIGCQMVALNFQTPGLPMDLQNGKFLDNGGSGYILKPHF LRESKSYFNPSNIKEGMPITLTIRLISGIQLPLTHSSSNKGDSLVIIEVFGVPNDQ MKQQTRVIKKNFA SPRWNETFTFIIHVPELALIRFVVEGQGLIAGNEFLGQYTLP LLCMNKG YRRIP LFSRMGESLEPASLFVYVWYVR
Source	E.coli
Target Names	PLCZ1
Expression Region	1-415aa
Notes	Repeated freezing and thawing is not recommended. Store working aliquots at 4°C for up to one week.
Tag Info	N-terminal 6xHis-SUMO-tagged
Mol. Weight	64.5kDa
Protein Length	Full length of isoform 2



Image



(Tris-Glycine gel) Discontinuous SDS-PAGE (reduced) with 5% enrichment gel and 15% separation gel.

Shelf Life

The shelf life is related to many factors, storage state, buffer ingredients, storage temperature and the stability of the protein itself.

Generally, the shelf life of liquid form is 6 months at -20°C/-80°C. The shelf life of lyophilized form is 12 months at -20°C/-80°C.