

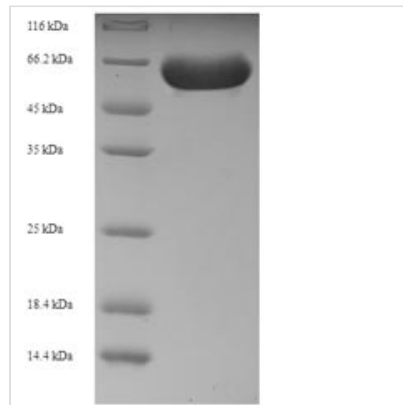


# Recombinant Human Receptor-interacting serine/threonine-protein kinase 2 (RIPK2)

<b>Product Code</b>	CSB-EP019736HU
<b>Relevance</b>	Serine/threonine/tyrosine kinase that plays an essential role in modulation of innate and adaptive immune responses. Upon stimulation by bacterial peptidoglycans, NOD1 and NOD2 are activated, oligomerize and recruit RIPK2 through CARD-CARD domains. Contributes to the tyrosine phosphorylation of the guanine exchange factor ARHGEF2 through Src tyrosine kinase leading to NF-kappaB activation by NOD2. Once recruited, RIPK2 autophosphorylates and undergoes 'Lys-63'-linked polyubiquitination by E3 ubiquitin ligases XIAP, BIRC2 and BIRC3. The polyubiquitinated protein mediates the recruitment of MAP3K7/TAK1 to IKBKG/NO and induces 'Lys-63'-linked polyubiquitination of IKBKG/NO and subsequent activation of IKBKB/IKKB. In turn, NF-kappa-B is released from NF-kappa-B inhibitors and translocates into the nucleus where it activates the transcription of hundreds of genes involved in immune response, growth control, or protection against apoptosis. Plays also a role during engagement of the T-cell receptor (TCR) in promoting BCL10 phosphorylation and subsequent NF-kappa-B activation.
<b>Abbreviation</b>	Recombinant Human RIPK2 protein
<b>Storage</b>	The shelf life is related to many factors, storage state, buffer ingredients, storage temperature and the stability of the protein itself. Generally, the shelf life of liquid form is 6 months at -20°C/-80°C. The shelf life of lyophilized form is 12 months at -20°C/-80°C.
<b>Uniprot No.</b>	O43353
<b>Alias</b>	CARD-containing interleukin-1 beta-converting enzyme-associated kinase ;CARD-containing IL-1 beta ICE-kinaseRIP-like-interacting CLARP kinaseReceptor-interacting protein 2 ;RIP-2Tyrosine-protein kinase RIPK2 (EC:2.7.10.2)
<b>Product Type</b>	Recombinant Protein
<b>Immunogen Species</b>	Homo sapiens (Human)
<b>Purity</b>	Greater than 90% as determined by SDS-PAGE.
<b>Sequence</b>	MNGEAICSAALPTIPYHKLADLRYLSRGASGTVSSARHADWRVQVAVKHLHIHT PLLDSERKDVLR AEILHKARFSYILPILGICNEPEFLGIVTEYMPNGSLNELLHR KTEYPDVAWPLRFRILHEIALGVNYLHNMTPELLHDLKTQNILLDNEFHVKIAD FGLSKWRMMSLSQSRSSKSAPEGGTIYMPPENYEPGQKSRASIKHDIYSYAVI TWEVLSRKQPFEDVTNPLQIMYSVSQGHRPVINEESLPYDIPHRARMISLIESG WAQNPDERPSFLKCLIELEPVLRTFEEITFLEAVIQLKKTQLQSVSSAIHLCDKK KMELSLNIPVNHGPQEEESCGSSQLHENSQSPETSRLPAPQDNDFLSRKAQD CYFMKLHHCPGNHSWDSTISGSQRAAFCDHKTTPCSSAIINPLSTAGNSERLQ PGIAQQWIQSKREDIVNQMTEACLNQSLDALLSRDLIMKEDYELVSTKPTRTSK VRQLLDTTDIQGEEFAKVIVQKLDKNQMGMLQPYPEILVVSRSPLNLLQNKSM



<b>Research Area</b>	Immunology
<b>Source</b>	E.coli
<b>Target Names</b>	RIPK2
<b>Expression Region</b>	1-540aa
<b>Notes</b>	Repeated freezing and thawing is not recommended. Store working aliquots at 4°C for up to one week.
<b>Tag Info</b>	N-terminal 6xHis-tagged
<b>Mol. Weight</b>	65.2kDa
<b>Protein Length</b>	Full Length

**Image**


(Tris-Glycine gel) Discontinuous SDS-PAGE (reduced) with 5% enrichment gel and 15% separation gel.

**Reconstitution**

We recommend that this vial be briefly centrifuged prior to opening to bring the contents to the bottom. Please reconstitute protein in deionized sterile water to a concentration of 0.1-1.0 mg/mL. We recommend to add 5-50% of glycerol (final concentration) and aliquot for long-term storage at -20°C/-80°C. Our default final concentration of glycerol is 50%. Customers could use it as reference.

**Shelf Life**

The shelf life is related to many factors, storage state, buffer ingredients, storage temperature and the stability of the protein itself. Generally, the shelf life of liquid form is 6 months at -20°C/-80°C. The shelf life of lyophilized form is 12 months at -20°C/-80°C.