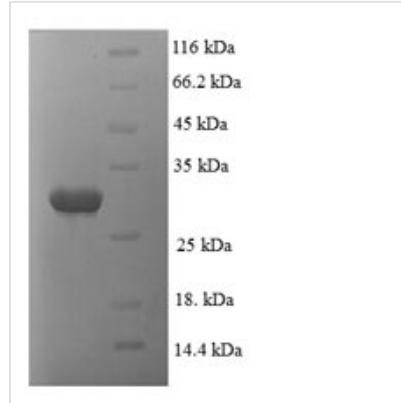




Recombinant Human Proteasome subunit alpha type-1 (PSMA1), partial

Product Code	CSB-EP018865HU
Relevance	The proteasome is a multicatalytic proteinase complex which is characterized by its ability to cleave peptides with Arg, Phe, Tyr, Leu, and Glu adjacent to the leaving group at neutral or slightly basic pH. The proteasome has an ATP-dependent proteolytic activity. Mediates the lipopolysaccharide-induced signal transduction in the macrophage proteasome . Might be involved in the anti-inflammatory response of macrophages during the interaction with C.albicans heat-inactivated cells .
Abbreviation	Recombinant Human PSMA1 protein, partial
Storage	The shelf life is related to many factors, storage state, buffer ingredients, storage temperature and the stability of the protein itself. Generally, the shelf life of liquid form is 6 months at -20°C/-80°C. The shelf life of lyophilized form is 12 months at -20°C/-80°C.
Uniprot No.	P25786
Alias	30 kDa prosomal protein ;PROS-30Macropain subunit C2Multicatalytic endopeptidase complex subunit C2;Proteasome component C2;Proteasome nu chain
Product Type	Recombinant Protein
Immunogen Species	Homo sapiens (Human)
Purity	≥ 90% as determined by SDS-PAGE.
Sequence	MFRNQYDNDVTWSPQGRIHQIEYAMEAVKQGSATVGLKSKTHAVLVALKRA QSELAAHQKKILHVDNHIGISIAGLTADARLLCNFMRQECLDSRFVFDRLPVS RLVSLIGSKTQIPTQRYGRRPYGVGLLIAGYDDMGPHIFQTCPSANYFDCRAM SIGARSQSARTYLERHMSEFMECNLNELVKHGLRALRETLPAEQDLTTKNVSI GIVGKDLEFTIYDDDDVSPFLEGLEERPQRKAQPAQPAD
Research Area	Immunology
Source	E.coli
Target Names	PSMA1
Expression Region	1-251aa
Notes	Repeated freezing and thawing is not recommended. Store working aliquots at 4°C for up to one week.
Tag Info	N-terminal 6xHis-tagged
Mol. Weight	32.2kDa
Protein Length	Partial
Image	



(Tris-Glycine gel) Discontinuous SDS-PAGE (reduced) with 5% enrichment gel and 15% separation gel.

Reconstitution

We recommend that this vial be briefly centrifuged prior to opening to bring the contents to the bottom. Please reconstitute protein in deionized sterile water to a concentration of 0.1-1.0 mg/mL. We recommend to add 5-50% of glycerol (final concentration) and aliquot for long-term storage at -20°C/-80°C. Our default final concentration of glycerol is 50%. Customers could use it as reference.

Shelf Life

The shelf life is related to many factors, storage state, buffer ingredients, storage temperature and the stability of the protein itself. Generally, the shelf life of liquid form is 6 months at -20°C/-80°C. The shelf life of lyophilized form is 12 months at -20°C/-80°C.