



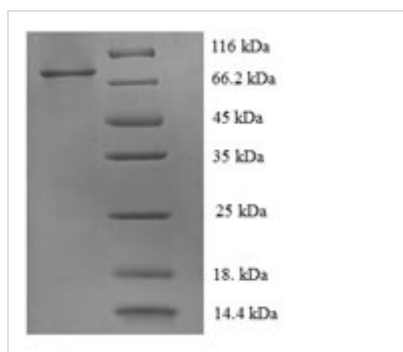
Recombinant Human Receptor tyrosine-protein kinase erbB-2 (ERBB2), partial

Product Code	CSB-EP007763HU
Relevance	Protein tyrosine kinase that is part of several cell surface receptor complexes, but that apparently needs a coreceptor for ligand binding. Essential component of a neuregulin-receptor complex, although neuregulins do not interact with it alone. GP30 is a potential ligand for this receptor. Regulates outgrowth and stabilization of peripheral microtubules (MTs). Upon ERBB2 activation, the MO1-RHOA-DIAPH1 signaling pathway elicits the phosphorylation and thus the inhibition of GSK3B at cell mbrane. This prevents the phosphorylation of APC and CLASP2, allowing its association with the cell mbrane. In turn, mbrane-bound APC allows the localization of MACF1 to the cell mbrane, which is required for microtubule capture and stabilization. In the nucleus is involved in transcriptional regulation. Associates with the 5'-TCAAATTC-3' sequence in the PTGS2/COX-2 promoter and activates its transcription. Implicated in transcriptional activation of CDKN1A; the function involves STAT3 and SRC. Involved in the transcription of rRNA genes by RNA Pol I and enhances protein synthesis and cell growth.
Abbreviation	Recombinant Human ERBB2 protein, partial
Storage	The shelf life is related to many factors, storage state, buffer ingredients, storage temperature and the stability of the protein itself. Generally, the shelf life of liquid form is 6 months at -20°C/-80°C. The shelf life of lyophilized form is 12 months at -20°C/-80°C.
Uniprot No.	P04626
Alias	Metastatic lymph node gene 19 protein ;MLN 19Proto-oncogene NeuProto-oncogene c-ErbB-2Tyrosine kinase-type cell surface receptor HER2p185erbB2;; CD340
Product Type	Recombinant Protein
Immunogen Species	Homo sapiens (Human)
Purity	≥ 90% as determined by SDS-PAGE.
Sequence	TQVCTGTDMLRPLASPETHLDMLRHLYQGCQVVQGNLELTYLPTNASLSFL QDIQEVQGYVLIAHNQVRQVPLQRLRIVRGTQLFEDNYALAVLDNGDPLNNTT PVTGASPGGLRELQLRSLTEILKGGVLIQRNPQLCYQDITLWKDIFHKNNQLAL TLIDTNRSRACHPCSPMCKGSRGWGESSEDCQSLTRTV CAGGCARCKGPLP TDCCHEQCAAGCTGPKHSDCLACLHFNHSGICELHCPALVTYNTDTFESMPN PEGRYTFGASCVTACPYNYLSTDVGSCTLVCPLHNQEVT AEDGTQRCEKCSK PCARVCYGLGMEHLREVRVAVTSANIQEFAGCKKIFGSLAFLPESFDGDPASNT APLQPEQLQVFETLEEITGYLYISAWPDSLPLDSVFNQLQVIRGRILHNGAYSLT LQGLGISWLGLRSLRELGSGLALIHHTHLCFVHTVPWDQLFRNPHQALLHTA NRPEDECVGEGLACHQLCARGHCWGPPTQCVNCSQFLRGQECVVEECRVL QGLPREYVNARHCLPCHPECCPQNGSVTCFGPEADQCVACAHYKDPFPCVA RCP SGVKPDL SYMPIWKFPDEEGACQPCPINCTHSCVDLDDKGC PAEQ RASP

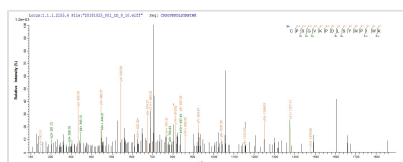


LT

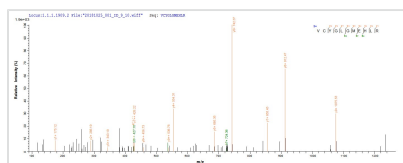
Research Area	Transcription
Source	E.coli
Target Names	ERBB2
Expression Region	23-652aa
Notes	Repeated freezing and thawing is not recommended. Store working aliquots at 4°C for up to one week.
Tag Info	N-terminal 6xHis-tagged
Mol. Weight	73.3kDa
Protein Length	Extracellular Domain

Image


(Tris-Glycine gel) Discontinuous SDS-PAGE (reduced) with 5% enrichment gel and 15% separation gel.



Based on the SEQUEST from database of E.coli host and target protein, the LC-MS/MS Analysis result of CSB-EP007763HU could indicate that this peptide derived from E.coli-expressed Homo sapiens (Human) ERBB2.



Based on the SEQUEST from database of E.coli host and target protein, the LC-MS/MS Analysis result of CSB-EP007763HU could indicate that this peptide derived from E.coli-expressed Homo sapiens (Human) ERBB2.

Reconstitution

We recommend that this vial be briefly centrifuged prior to opening to bring the contents to the bottom. Please reconstitute protein in deionized sterile water to a concentration of 0.1-1.0 mg/mL. We recommend to add 5-50% of glycerol (final concentration) and aliquot for long-term storage at -20°C/-80°C. Our default final concentration of glycerol is 50%. Customers could use it as reference.

Shelf Life

The shelf life is related to many factors, storage state, buffer ingredients, storage temperature and the stability of the protein itself. Generally, the shelf life of liquid form is 6 months at -20°C/-80°C. The shelf life of lyophilized form is 12 months at -20°C/-80°C.