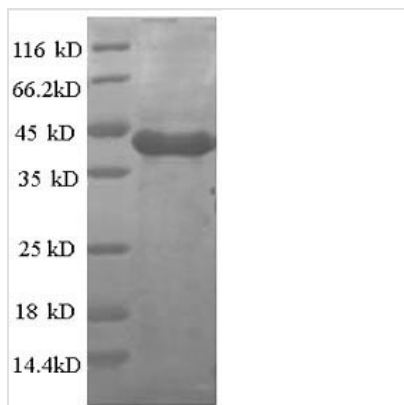


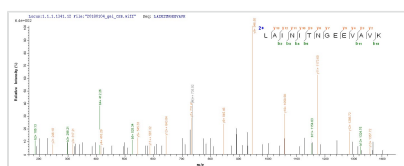


Recombinant Human Casein kinase I isoform alpha (CSNK1A1)

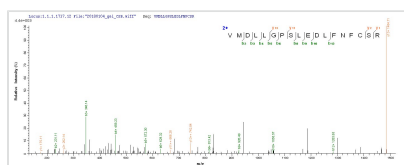
Product Code	CSB-EP006065HU
Relevance	Casein kinases are operationally defined by their preferential utilization of acidic proteins such as caseins as substrates. It can phosphorylate a large number of proteins. Participates in Wnt signaling. Phosphorylates CTNNB1 at 'Ser-45'. May phosphorylate PER1 and PER2. May play a role in segregating chromosomes during mitosis.
Abbreviation	Recombinant Human CSNK1A1 protein
Storage	The shelf life is related to many factors, storage state, buffer ingredients, storage temperature and the stability of the protein itself. Generally, the shelf life of liquid form is 6 months at -20°C/-80°C. The shelf life of lyophilized form is 12 months at -20°C/-80°C.
Uniprot No.	P48729
Alias	CK1
Product Type	Recombinant Protein
Immunogen Species	Homo sapiens (Human)
Purity	Greater than 90% as determined by SDS-PAGE.
Sequence	ASSSGSKAEFIVGGKYKLVKIGSGSFGDIYLAINITNGEEVAVKLESQKARHPQ LLYESKLYKILQGGVGIPHIRWYGQEKDYNVLMDLLGPSLEDLFNFCSRRFTM KTVLMLADQMISRIEYVHTKNFIHRDIKPDNFLMGIGRHCNKLFLIDFGLAKKYR DNRTRQHIPPYREDKNLTGTARYASINAHLGIEQSRRDDMESLGYVLMYFNRTS LPWQGLKAATKKQKYEKISEKKMSTPVEVLCKGFPAEFAMYLNYCRGLRFEEA PDYMYLRQLFRILFRTLNHQYDYTFDWTMLKQKAAQQAASSSGGQQQAQTPT GKQTDKTKSNMKGf
Research Area	Cell Cycle
Source	E.coli
Target Names	CSNK1A1
Expression Region	2-337aa
Notes	Repeated freezing and thawing is not recommended. Store working aliquots at 4°C for up to one week.
Tag Info	N-terminal 6xHis-tagged
Mol. Weight	42.8kDa
Protein Length	Full Length of Mature Protein
Image	



(Tris-Glycine gel) Discontinuous SDS-PAGE (reduced) with 5% enrichment gel and 15% separation gel.



Based on the SEQUEST from database of E.coli host and target protein, the LC-MS/MS Analysis result of CSB-EP006065HU could indicate that this peptide derived from E.coli-expressed Homo sapiens (Human) CSNK1A1.



Based on the SEQUEST from database of E.coli host and target protein, the LC-MS/MS Analysis result of CSB-EP006065HU could indicate that this peptide derived from E.coli-expressed Homo sapiens (Human) CSNK1A1.

Reconstitution

We recommend that this vial be briefly centrifuged prior to opening to bring the contents to the bottom. Please reconstitute protein in deionized sterile water to a concentration of 0.1-1.0 mg/mL. We recommend to add 5-50% of glycerol (final concentration) and aliquot for long-term storage at -20°C/-80°C. Our default final concentration of glycerol is 50%. Customers could use it as reference.

Shelf Life

The shelf life is related to many factors, storage state, buffer ingredients, storage temperature and the stability of the protein itself. Generally, the shelf life of liquid form is 6 months at -20°C/-80°C. The shelf life of lyophilized form is 12 months at -20°C/-80°C.