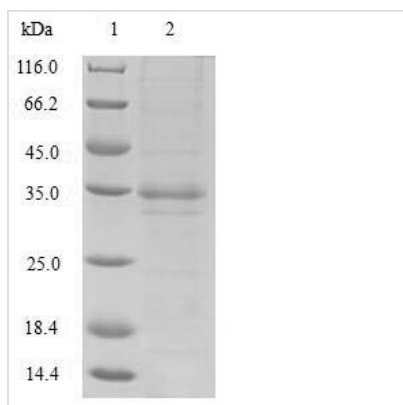




# Recombinant Bordetella pertussis Serotype 3 fimbrial subunit (fim3)

<b>Product Code</b>	CSB-EP322971BUA
<b>Relevance</b>	Bordetella pertussis is the causative agent of whooping cough. An essential step in the disease process is the attachment of the bacteria to the ciliated epithelium of the respiratory tract, enabling the organism to resist normal host-clearance mechanisms. It is unclear which bacterial cell surface component are responsible for adherence but the fimbriae of B.pertussis are prime candidates for being involved in this process.
<b>Abbreviation</b>	Recombinant Bordetella pertussis fim3 protein
<b>Storage</b>	The shelf life is related to many factors, storage state, buffer ingredients, storage temperature and the stability of the protein itself. Generally, the shelf life of liquid form is 6 months at -20°C/-80°C. The shelf life of lyophilized form is 12 months at -20°C/-80°C.
<b>Uniprot No.</b>	P17835
<b>Product Type</b>	Recombinant Protein
<b>Immunogen Species</b>	Bordetella pertussis (strain Tohama I / ATCC BAA-589 / NCTC 13251)
<b>Purity</b>	Greater than 90% as determined by SDS-PAGE.
<b>Sequence</b>	NDGTIVITGSI SDQTCVIEEPSTLNHIKVVQLPKISKNALRNDGDTAGATPFDIKL KECPQALGALKLYFEPGITTNYDTGDLIAYKQTYNASGNGNLSTVSSATKAKGV EFRLANLNGQHIRMGTDKTTQAAQTFTGKVTNGSKSYTLRYLASVYVKKPKEDV DAAQITSYVGFSSVYP
<b>Research Area</b>	Others
<b>Source</b>	E.coli
<b>Target Names</b>	fim3
<b>Expression Region</b>	26-204aa
<b>Notes</b>	Repeated freezing and thawing is not recommended. Store working aliquots at 4°C for up to one week.
<b>Tag Info</b>	N-terminal 6xHis-SUMO-tagged
<b>Mol. Weight</b>	35.2kDa
<b>Protein Length</b>	Full Length of Mature Protein
<b>Image</b>	



(Tris-Glycine gel) Discontinuous SDS-PAGE (reduced) with 5% enrichment gel and 15% separation gel.

### Reconstitution

We recommend that this vial be briefly centrifuged prior to opening to bring the contents to the bottom. Please reconstitute protein in deionized sterile water to a concentration of 0.1-1.0 mg/mL. We recommend to add 5-50% of glycerol (final concentration) and aliquot for long-term storage at -20°C/-80°C. Our default final concentration of glycerol is 50%. Customers could use it as reference.

### Shelf Life

The shelf life is related to many factors, storage state, buffer ingredients, storage temperature and the stability of the protein itself. Generally, the shelf life of liquid form is 6 months at -20°C/-80°C. The shelf life of lyophilized form is 12 months at -20°C/-80°C.