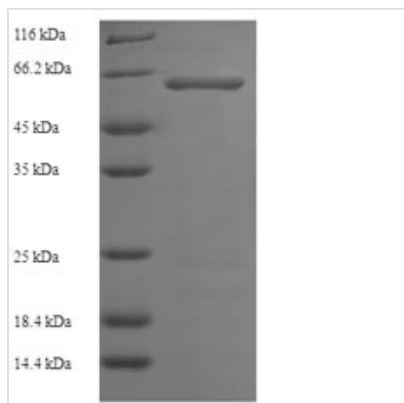




Recombinant Human Serine/threonine-protein kinase 25 (STK25)

Product Code	CSB-EP022842HU
Relevance	Oxidant stress-activated serine/threonine kinase that may play a role in the response to environmental stress. Targets to the Golgi apparatus where it appears to regulate protein transport events, cell adhesion, and polarity complexes important for cell migration.
Abbreviation	Recombinant Human STK25 protein
Storage	The shelf life is related to many factors, storage state, buffer ingredients, storage temperature and the stability of the protein itself. Generally, the shelf life of liquid form is 6 months at -20°C/-80°C. The shelf life of lyophilized form is 12 months at -20°C/-80°C.
Uniprot No.	O00506
Alias	Ste20-like kinase;Sterile 20/oxidant stress-response kinase 1 ;SOK-1 ;Ste20/oxidant stress response kinase 1
Product Type	Recombinant Protein
Immunogen Species	Homo sapiens (Human)
Purity	≥ 90% as determined by SDS-PAGE.
Sequence	MAHLRGFANQHSRVDPEELFTKLDRIKGSFGEVYKGIDNHTKEVVAIKIIDLEE AEDEIEDIQQEITVLSQCDSPIYTRYFGSYLKSTKLWIIMEYLGSGSALDLLKPG PLEETYIATILREILKGLDYHLSERKIHARDIKAANVLLSEQGDVKLADFGVAGQLT DTQIKRNTFVGTFFWMAPEVIKQSAYDFKADIWLSGITAIELAKGEPNSDLHP MRVLFLIPKNSPPTLEGQHSKPFKEFVEACLNKDPRFRPTAKELLKHKFITRYT KKTSFLELIDRYKRWKSEGHGEESSSESDIDGEAEDGEQGPIWTFPPTIRP SPHSLHKG TALHSSQKPAEPVKRQPRSQCCLSTLVRPVFGELKEKHKQSGGS VGALEELENAFSLAEESCPGISDKLMVHLVERVQRFSHNRNHLTSTR
Research Area	Signal Transduction
Source	E.coli
Target Names	STK25
Expression Region	1-426aa
Notes	Repeated freezing and thawing is not recommended. Store working aliquots at 4°C for up to one week.
Tag Info	N-terminal 6xHis-SUMO-tagged
Mol. Weight	64.1kDa
Protein Length	Full Length
Image	



(Tris-Glycine gel) Discontinuous SDS-PAGE (reduced) with 5% enrichment gel and 15% separation gel.

Reconstitution

We recommend that this vial be briefly centrifuged prior to opening to bring the contents to the bottom. Please reconstitute protein in deionized sterile water to a concentration of 0.1-1.0 mg/mL. We recommend to add 5-50% of glycerol (final concentration) and aliquot for long-term storage at -20°C/-80°C. Our default final concentration of glycerol is 50%. Customers could use it as reference.

Shelf Life

The shelf life is related to many factors, storage state, buffer ingredients, storage temperature and the stability of the protein itself. Generally, the shelf life of liquid form is 6 months at -20°C/-80°C. The shelf life of lyophilized form is 12 months at -20°C/-80°C.