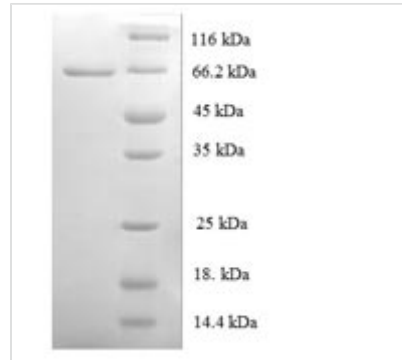




Recombinant Human Origin recognition complex subunit 4 (ORC4)

Product Code	CSB-EP017234HU
Relevance	Component of the origin recognition complex (ORC) that binds origins of replication. DNA-binding is ATP-dependent. The specific DNA sequences that define origins of replication have not been identified yet. ORC is required to assemble the pre-replication complex necessary to initiate DNA replication. Binds histone H3 and H4 trimethylation marks H3K9me3, H3K27me3 and H4K20me3.
Abbreviation	Recombinant Human ORC4 protein
Storage	The shelf life is related to many factors, storage state, buffer ingredients, storage temperature and the stability of the protein itself. Generally, the shelf life of liquid form is 6 months at -20°C/-80°C. The shelf life of lyophilized form is 12 months at -20°C/-80°C.
Uniprot No.	O43929
Product Type	Recombinant Protein
Immunogen Species	Homo sapiens (Human)
Purity	≥ 90% as determined by SDS-PAGE.
Sequence	MSSRKSKSNSLIHTECLSQVQRILRERFCRQSPHSNLFQVQVQYKHLSELLKR TALHGESNSVLIIGPRGSGKTMLINHALKELMEIEEVSENVLQVHLNGLLQINDKI ALKEITRQLNLENNVVGDKVFGSFAENLSFLLEALKKGDRTSSCPVIFILDEFDLF AHHKNQTLNLFDISQSAQTPIAVIGLTCRLDILELLEKRVKSRFShRQIHLMN SFGFPQYVKIFKEQLSLPAEFPDKVFAEKWNENVQYLSEDRSVQEVLQKHFNI SKNLRSLHMLLMLALNRVTASHPFMTAVDLMEASQLCSMDSKANIVHGLSVLE ICLIAMKHLNDIYEEEPFNFMVYNEFQKFVQRKAHSVYNFEKPVVMKAFEHL QQLELIKPMERTSGNSQREYQLMKLLLDNTQIMNALQKYPNCPTDVRQWATS SLSWL
Research Area	Transcription
Source	E.coli
Target Names	ORC4
Expression Region	1-436aa
Notes	Repeated freezing and thawing is not recommended. Store working aliquots at 4°C for up to one week.
Tag Info	N-terminal 6xHis-SUMO-tagged
Mol. Weight	66.4kDa
Protein Length	Full Length
Image	



(Tris-Glycine gel) Discontinuous SDS-PAGE (reduced) with 5% enrichment gel and 15% separation gel.

Reconstitution

We recommend that this vial be briefly centrifuged prior to opening to bring the contents to the bottom. Please reconstitute protein in deionized sterile water to a concentration of 0.1-1.0 mg/mL. We recommend to add 5-50% of glycerol (final concentration) and aliquot for long-term storage at -20°C/-80°C. Our default final concentration of glycerol is 50%. Customers could use it as reference.

Shelf Life

The shelf life is related to many factors, storage state, buffer ingredients, storage temperature and the stability of the protein itself.

Generally, the shelf life of liquid form is 6 months at -20°C/-80°C. The shelf life of lyophilized form is 12 months at -20°C/-80°C.