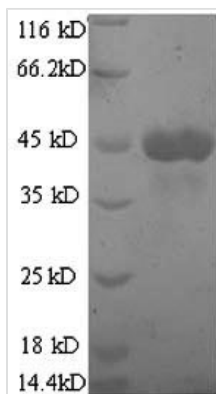




Recombinant Human Killer cell lectin-like receptor subfamily G member 2 (KLRG2)

Product Code	CSB-YP012473HU
Storage	The shelf life is related to many factors, storage state, buffer ingredients, storage temperature and the stability of the protein itself. Generally, the shelf life of liquid form is 6 months at -20°C/-80°C. The shelf life of lyophilized form is 12 months at -20°C/-80°C.
Uniprot No.	A4D1S0
Alias	C-type lectin domain family 15 member B
Product Type	Recombinant Protein
Immunogen Species	Homo sapiens (Human)
Purity	≥ 90% as determined by SDS-PAGE.
Sequence	MEESWEAAPGGQAGAE LPM E P V G S L V P T L E Q P Q V P A K V R Q P E G P E S S P S P A G A V E K A A G A G L E P S S K K K P P S P R P G S P R V P P L S L G Y G V C P E P P S P G P A L V K L P R N G E A P G A E P A P S A W A P M E L Q V D V R V K P V G A A G G S S T P S P R P S T R F L K V P V P E S P A F S R H A D P A H Q L L L R A P S Q G G T W G R R S P L A A A R T E S G C D A E G R A S P A E G S A G S P G S P T C C R C K E L G L E K E D A A L L P R A G L D G D E K L P R A V T L T G L P M Y V K S L Y W A L A F M A V L L A V S G V V I V V L A S R A G A R C Q Q C P P G W V L S E E H C Y Y F S A E A Q A W E A S Q A F C S A Y H A T L P L L S H T Q D F L G R Y P V S R H S W V G A W R G P Q G W H W I D E A P L P P Q L L P E D G E D N L D I N C G A L E E G T L V A A N C S T P R P W V C A K G T Q
Research Area	Cell Biology
Source	Yeast
Target Names	KLRG2
Protein Names	Recommended name: Killer cell lectin-like receptor subfamily G member 2 Alternative name(s): C-type lectin domain family 15 member B
Expression Region	1-409aa
Notes	Repeated freezing and thawing is not recommended. Store working aliquots at 4°C for up to one week.
Tag Info	N-terminal 6xHis-tagged
Mol. Weight	44.9kDa
Protein Length	Full Length
Image	



(Tris-Glycine gel) Discontinuous SDS-PAGE (reduced) with 5% enrichment gel and 15% separation gel.

Reconstitution

We recommend that this vial be briefly centrifuged prior to opening to bring the contents to the bottom. Please reconstitute protein in deionized sterile water to a concentration of 0.1-1.0 mg/mL. We recommend to add 5-50% of glycerol (final concentration) and aliquot for long-term storage at -20°C/-80°C. Our default final concentration of glycerol is 50%. Customers could use it as reference.

Shelf Life

The shelf life is related to many factors, storage state, buffer ingredients, storage temperature and the stability of the protein itself. Generally, the shelf life of liquid form is 6 months at -20°C/-80°C. The shelf life of lyophilized form is 12 months at -20°C/-80°C.