

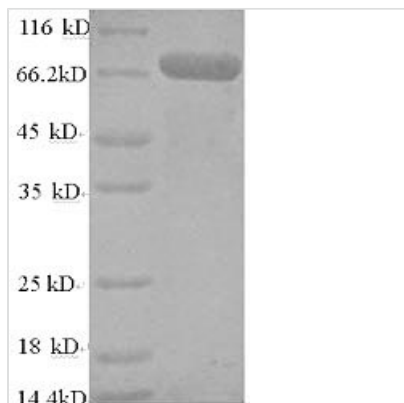


Recombinant Human TNF receptor-associated factor 6 (TRAF6)

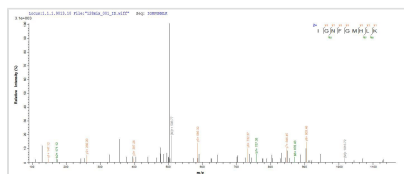
Product Code	CSB-EP024154HU
Relevance	E3 ubiquitin ligase that, together with UBE2N and UBE2V1, mediates the synthesis of 'Lys-63'-linked-polyubiquitin chains conjugated to proteins, such as IKBKG, IRAK1, AKT1 and AKT2. Also mediates ubiquitination of free/unanchored polyubiquitin chain that leads to MAP3K7 activation. Leads to the activation of NF-kappa-B and JUN. May be essential for the formation of functional osteoclasts. Ses to also play a role in dendritic cells (DCs) maturation and/or activation. Represses c-Myb-mediated transactivation, in B-lymphocytes. Adapter protein that ses to play a role in signal transduction initiated via TNF receptor, IL-1 receptor and IL-17 receptor. Regulates osteoclast differentiation by mediating the activation of adapter protein complex 1 (AP-1) and NF-kappa-B, in response to RANK-L stimulation. Together with MAP3K8, mediates CD40 signals that activate ERK in B-cells and macrophages, and thus may play a role in the regulation of immunoglobulin production
Abbreviation	Recombinant Human TRAF6 protein
Storage	The shelf life is related to many factors, storage state, buffer ingredients, storage temperature and the stability of the protein itself. Generally, the shelf life of liquid form is 6 months at -20°C/-80°C. The shelf life of lyophilized form is 12 months at -20°C/-80°C.
Uniprot No.	Q9Y4K3
Alias	E3 ubiquitin-protein ligase TRAF6Interleukin-1 signal transducerRING finger protein 85
Product Type	Recombinant Protein
Immunogen Species	Homo sapiens (Human)
Purity	Greater than 90% as determined by SDS-PAGE.
Sequence	MSLLNCENSCGSSQSESDCCVAMASSCSAVTKDDSVGGTASTGNLSSSFME EIQGYDVEFDPPLESKYECPICLMALREAVQTPCGHRFCKACIIKSIRDAGHKC PVDNEILLENQLFPDNFAKREILSLMVKCPNEGCLHKMELRHLEDHQAHCFA LMDCPQCQRPFQKFHINIHLKDCPRRQVSCDNCAASMAFEDKEIHDQNCPLA NVICEYCNLILIREQMPNHYDLDCPTAPIPCTFSTFGCHEKMQRNHLARHLQEN TQSHMRMLAQAVHLSVIPDSGYISEVRNFQETIHQLEGRQVLRQDHQIRELTAK METQSMYVSELKRTIRTLEDKVAEIEAQQCNGIYWKIGNFGMHLKCQEEKPV VIHSPGFYTGKPGYKLCMRLHLQLPTAQRCANYISLHVHTMQGEYDShLPWPF QGTIRLTILDQSEAPVRQNHEEIMDAKPELLAFQRPTIPRNPKGFGYVTFMHLE ALRQRTFIKDDTLLVRCEVSTRFDMGSLRREGFQPRSTDAGV
Research Area	Developmental Biology
Source	E.coli
Target Names	TRAF6



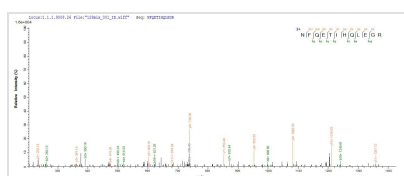
Expression Region	1-522aa
Notes	Repeated freezing and thawing is not recommended. Store working aliquots at 4°C for up to one week.
Tag Info	N-terminal 6xHis-SUMO-tagged
Mol. Weight	75.6kDa
Protein Length	Full Length

Image


(Tris-Glycine gel) Discontinuous SDS-PAGE (reduced) with 5% enrichment gel and 15% separation gel.



Based on the SEQUEST from database of E.coli host and target protein, the LC-MS/MS Analysis result of CSB-EP024154HU could indicate that this peptide derived from E.coli-expressed Homo sapiens (Human) TRAF6.



Based on the SEQUEST from database of E.coli host and target protein, the LC-MS/MS Analysis result of CSB-EP024154HU could indicate that this peptide derived from E.coli-expressed Homo sapiens (Human) TRAF6.

Reconstitution

We recommend that this vial be briefly centrifuged prior to opening to bring the contents to the bottom. Please reconstitute protein in deionized sterile water to a concentration of 0.1-1.0 mg/mL. We recommend to add 5-50% of glycerol (final concentration) and aliquot for long-term storage at -20°C/-80°C. Our default final concentration of glycerol is 50%. Customers could use it as reference.

Shelf Life

The shelf life is related to many factors, storage state, buffer ingredients, storage temperature and the stability of the protein itself. Generally, the shelf life of liquid form is 6 months at -20°C/-80°C. The shelf life of lyophilized form is 12 months at -20°C/-80°C.