

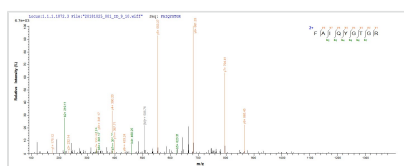


Recombinant Human Napsin-A (NAPSA)

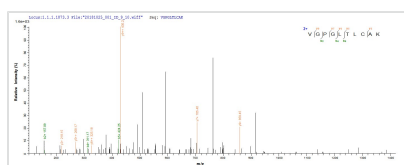
Product Code	CSB-EP015452HU
Relevance	May be involved in processing of pneumocyte surfactant precursors.
Abbreviation	Recombinant Human NAPSA protein
Storage	The shelf life is related to many factors, storage state, buffer ingredients, storage temperature and the stability of the protein itself. Generally, the shelf life of liquid form is 6 months at -20°C/-80°C. The shelf life of lyophilized form is 12 months at -20°C/-80°C.
Uniprot No.	O96009
Alias	Aspartyl protease 4 ;ASP4 ;Asp 4Napsin-1TA01/TA02
Product Type	Recombinant Protein
Immunogen Species	Homo sapiens (Human)
Purity	Greater than 90% as determined by SDS-PAGE.
Sequence	KPIFVPLSNYRDVQYFGEIGLGTTPQNFTVAFDTGSSNLWVPSRRCHFFSVPC WLHHRFDPKASSSFQANGTKFAIQYGTGRVDGILSEDKLTIGGIKASVIFGEA LWEPSTLVFAFAHFDGILGLGFPILSVEGVRPPMDVLVEQGLLDKPVFSFYLNRD PEEPDGGELVLGGSDPAHYIPPLTFVPVTPAYWQIHMERVKVGPGLTLCAKG CAAILDGTSLITGPTTEIRALHAAIGGIPLLAGHEYIILCSEIPKLPVASFLLGGVWF NLTAHDYVIQTRNGVRLCLSGFQALDVPPPAGPFWILGDVFLGTYVAVFDRG DMKSSARVGLARARTRGADLGWGETAQAQFPG
Research Area	Cell Biology
Source	E.coli
Target Names	NAPSA
Expression Region	64-420aa
Notes	Repeated freezing and thawing is not recommended. Store working aliquots at 4°C for up to one week.
Tag Info	N-terminal 6xHis-tagged
Mol. Weight	42.5kDa
Protein Length	Full Length of Mature Protein
Image	



(Tris-Glycine gel) Discontinuous SDS-PAGE (reduced) with 5% enrichment gel and 15% separation gel.



Based on the SEQUEST from database of E.coli host and target protein, the LC-MS/MS Analysis result of CSB-EP015452HU could indicate that this peptide derived from E.coli-expressed Homo sapiens (Human) NAPSA .



Based on the SEQUEST from database of E.coli host and target protein, the LC-MS/MS Analysis result of CSB-EP015452HU could indicate that this peptide derived from E.coli-expressed Homo sapiens (Human) NAPSA .

Reconstitution

We recommend that this vial be briefly centrifuged prior to opening to bring the contents to the bottom. Please reconstitute protein in deionized sterile water to a concentration of 0.1-1.0 mg/mL. We recommend to add 5-50% of glycerol (final concentration) and aliquot for long-term storage at -20°C/-80°C. Our default final concentration of glycerol is 50%. Customers could use it as reference.

Shelf Life

The shelf life is related to many factors, storage state, buffer ingredients, storage temperature and the stability of the protein itself. Generally, the shelf life of liquid form is 6 months at -20°C/-80°C. The shelf life of lyophilized form is 12 months at -20°C/-80°C.