

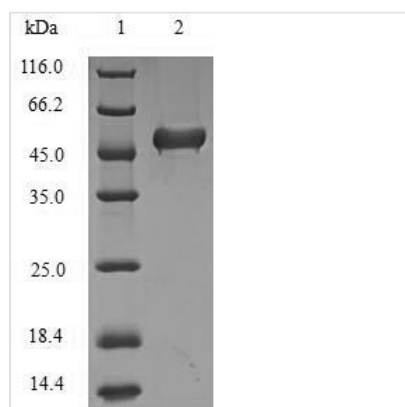


Recombinant Human Lys-63-specific deubiquitinase BRCC36 (BRCC3)

Product Code	CSB-EP002798HU
Relevance	<p>Metalloprotease that specifically cleaves 'Lys-63'-linked polyubiquitin chains. Does not have activity toward 'Lys-48'-linked polyubiquitin chains. Component of the BRCA1-A complex, a complex that specifically recognizes 'Lys-63'-linked ubiquitinated histones H2A and H2AX at DNA lesions sites, leading to target the BRCA1-BARD1 heterodimer to sites of DNA damage at double-strand breaks (DSBs). In the BRCA1-A complex, it specifically removes 'Lys-63'-linked ubiquitin on histones H2A and H2AX, antagonizing the RNF8-dependent ubiquitination at double-strand breaks (DSBs). Catalytic subunit of the BRISC complex, a multiprotein complex that specifically cleaves 'Lys-63'-linked ubiquitin in various substrates. Mediates the specific 'Lys-63'-specific deubiquitination associated with the COP9 signalosome complex (CSN), via the interaction of the BRISC complex with the CSN complex. The BRISC complex is required for normal mitotic spindle assembly and microtubule attachment to kinetochores via its role in deubiquitinating NUMA1. Plays a role in interferon signaling via its role in the deubiquitination of the interferon receptor IFNAR1; deubiquitination increases IFNAR1 activity by enhancing its stability and cell surface expression. Down-regulates the response to bacterial lipopolysaccharide (LPS) via its role in IFNAR1 deubiquitination.</p>
Abbreviation	Recombinant Human BRCC3 protein
Storage	The shelf life is related to many factors, storage state, buffer ingredients, storage temperature and the stability of the protein itself. Generally, the shelf life of liquid form is 6 months at -20°C/-80°C. The shelf life of lyophilized form is 12 months at -20°C/-80°C.
Uniprot No.	P46736
Alias	BRCA1-A complex subunit BRCC36 BRCA1/BRCA2-containing complex subunit 3 BRCA1/BRCA2-containing complex subunit 36 BRISC complex subunit BRCC36
Product Type	Recombinant Protein
Immunogen Species	Homo sapiens (Human)
Purity	≥ 90% as determined by SDS-PAGE.
Sequence	<p>AVQVVQAVQAVHLESDAFLVCLNHALSTEKEEVMGLCIGELNDDTRSDSKFAY TGTEMRTVAEKVDAVRIVHIHSVILRRSDKRKDRVEISPEQLSAASTEAEERLAE LTGRPMRVVGVYHSHPHITVWPSHVDVRTQAMYQMMDQGFVGLIFSCFIEDK NTKTGRVLYTCFQSIQAQKSSSESLHGPRDFWSSSQHISIEGQKEEERYERIEIPI HIVPHVTIGKVCLESAVELPKILCQEEQDAYRRIHSLTHLDSVTKIHNGSVFTKN LCSQMSAVSGPLLQWLEDRLEQNQQHLQELQQEKEELMQELSSLE</p>
Research Area	Cell Biology
Source	E.coli



Target Names	BRCC3
Expression Region	2-316aa
Notes	Repeated freezing and thawing is not recommended. Store working aliquots at 4°C for up to one week.
Tag Info	N-terminal 6xHis-SUMO-tagged
Mol. Weight	51.9kDa
Protein Length	Full Length of Mature Protein

Image


(Tris-Glycine gel) Discontinuous SDS-PAGE (reduced) with 5% enrichment gel and 15% separation gel.

Reconstitution

We recommend that this vial be briefly centrifuged prior to opening to bring the contents to the bottom. Please reconstitute protein in deionized sterile water to a concentration of 0.1-1.0 mg/mL. We recommend to add 5-50% of glycerol (final concentration) and aliquot for long-term storage at -20°C/-80°C. Our default final concentration of glycerol is 50%. Customers could use it as reference.

Shelf Life

The shelf life is related to many factors, storage state, buffer ingredients, storage temperature and the stability of the protein itself. Generally, the shelf life of liquid form is 6 months at -20°C/-80°C. The shelf life of lyophilized form is 12 months at -20°C/-80°C.