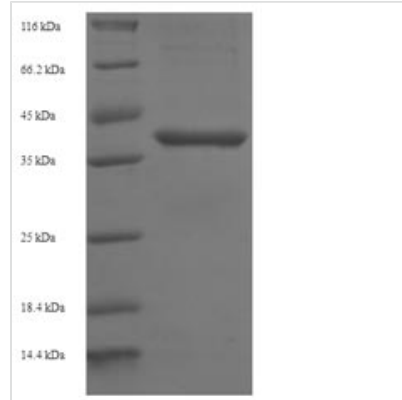




# Recombinant Human B-cell lymphoma/leukemia 10 (BCL10)

<b>Product Code</b>	CSB-EP002608HU
<b>Relevance</b>	Involved in adaptive immune response . Promotes apoptosis, pro-caspase-9 maturation and activation of NF-kappa-B via NIK and IKK. May be an adapter protein between upstream TNFR1-TRADD-RIP complex and the downstream NIK-IKK-IKAP complex. Is a substrate for MALT1 .
<b>Abbreviation</b>	Recombinant Human BCL10 protein
<b>Storage</b>	The shelf life is related to many factors, storage state, buffer ingredients, storage temperature and the stability of the protein itself. Generally, the shelf life of liquid form is 6 months at -20°C/-80°C. The shelf life of lyophilized form is 12 months at -20°C/-80°C.
<b>Uniprot No.</b>	O95999
<b>Alias</b>	B-cell CLL/lymphoma 10 ;hCLAPCED-3/ICH-1 prodomain homologous E10-like regulator ;CIPER;Cellular homolog of vCARMEN ;cCARMENCellular-E10 ;c-E10Mammalian CARD-containing adapter molecule E10 ;mE10
<b>Product Type</b>	Recombinant Protein
<b>Immunogen Species</b>	Homo sapiens (Human)
<b>Purity</b>	Greater than 90% as determined by SDS-PAGE.
<b>Sequence</b>	MEPTAPSLTEEDLTEVKKDALENLRVYLCEKIIAERHFDHLRAKKILSREDTEEIS CRTSSRKRAGKLLDYLQENPKGLDTLVESIRREKTQNFLIQKITDEVLKLNRNIK EHLKGLKCSSCEPFPDGATNLSRSNSDESINFSEKLRASTVMYHPEGESSTT PFFSTNSSLNLPVLEVGRTEIFSSSTLPRPGDPGAPPLPPDLQLEEEGTCAN SSEMFLPLRSRTVSRQ
<b>Research Area</b>	Apoptosis
<b>Source</b>	E.coli
<b>Target Names</b>	BCL10
<b>Expression Region</b>	1-233aa
<b>Notes</b>	Repeated freezing and thawing is not recommended. Store working aliquots at 4°C for up to one week.
<b>Tag Info</b>	N-terminal 6xHis-SUMO-tagged
<b>Mol. Weight</b>	42.3kDa
<b>Protein Length</b>	Full Length
<b>Image</b>	



(Tris-Glycine gel) Discontinuous SDS-PAGE (reduced) with 5% enrichment gel and 15% separation gel.

### Reconstitution

We recommend that this vial be briefly centrifuged prior to opening to bring the contents to the bottom. Please reconstitute protein in deionized sterile water to a concentration of 0.1-1.0 mg/mL. We recommend to add 5-50% of glycerol (final concentration) and aliquot for long-term storage at -20°C/-80°C. Our default final concentration of glycerol is 50%. Customers could use it as reference.

### Shelf Life

The shelf life is related to many factors, storage state, buffer ingredients, storage temperature and the stability of the protein itself. Generally, the shelf life of liquid form is 6 months at -20°C/-80°C. The shelf life of lyophilized form is 12 months at -20°C/-80°C.