

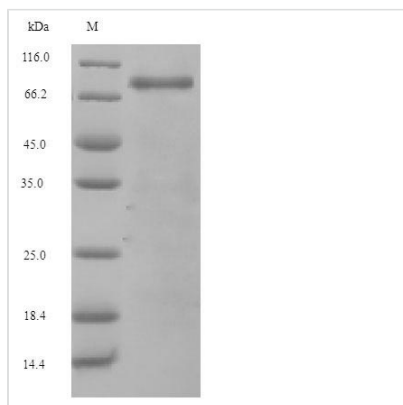


# Recombinant Mouse Complement factor B (Cfb)

<b>Product Code</b>	CSB-EP005268MO
<b>Relevance</b>	Factor B which is part of the alternate pathway of the complement system is cleaved by factor D into 2 fragments: Ba and Bb. Bb, a serine protease, then combines with complement factor 3b to generate the C3 or C5 convertase. It has also been implicated in proliferation and differentiation of preactivated B-lymphocytes, rapid spreading of peripheral blood monocytes, stimulation of lymphocyte blastogenesis and lysis of erythrocytes. Ba inhibits the proliferation of preactivated B-lymphocytes.
<b>Abbreviation</b>	Recombinant Mouse Cfb protein
<b>Storage</b>	The shelf life is related to many factors, storage state, buffer ingredients, storage temperature and the stability of the protein itself. Generally, the shelf life of liquid form is 6 months at -20°C/-80°C. The shelf life of lyophilized form is 12 months at -20°C/-80°C.
<b>Uniprot No.</b>	P04186
<b>Alias</b>	C3/C5 convertase Glycine-rich beta glycoprotein ;GBGPBF2;Properdin factor B
<b>Product Type</b>	Recombinant Protein
<b>Immunogen Species</b>	Mus musculus (Mouse)
<b>Purity</b>	Greater than 90% as determined by SDS-PAGE.
<b>Sequence</b>	TPVLEARPQVSCSLEGVEIKGGSFQLLQGGQALEYLCPSGFYPYPVQTRTCRS TGSWSDLQTRDQKIVQKAECRAIRCPRPQDFENGEFWPRSPFYNLSDQISFQ CYDGYVLRGSANRTCQENGRWDGQTAICDDGAGYCPNPGIPIGTRKVGYSQY RLEDIVTYHCSRGLVLRGSQKRKCQEGGSSWGTPEPSCQDSFMYDSPQEVAE AFLSSLTETIEGADAEDGHSPGEQQKRKIVLDPGSMNIYLVLDGSDSIGSSNF TGAKRCLTNLIEKVASYGVRPRYGLLTYATVPKVLVRVSDERSSDADWVTEKL NQISYEDHKLKSGTNTKRALQAVYSMMSWAGDAPPEGWNRTRHVIIIMTDGL HNMGGNPVTVIQDIRALLDIGRDPKNPREDYLDVYVFGVGPLVDSVNINALASK KDNEHHVFKVKDMEDLENVYQIMIDETKSLSLCGMVWEHKKGNDYHKQPWQ AKISVTRPLKGHETCMGAVVSEYFVLTAHCFMVDDQKHSIKVSVGGQRRDLE IEEVLFPKYNINGKKAEGIPEFYDYDVALVKLKNKLYGQTLRPICLPCTEGTT RALRLPQTATCKQHKEQLLPVKDVKALFVSEQGKSLTRKEVYIKNGDKKASCE RDATKAQGYEKVKDASEVVTPRFLCTGGVDPYADPNTCKGDSGGPLIVHKRS RFIQVGVISWGVVDVCRDQRRQQLVPSYARDFHINLFQVLPWLKDKLKDDEDLG FL
<b>Research Area</b>	Others
<b>Source</b>	E.coli
<b>Target Names</b>	Cfb
<b>Expression Region</b>	23-761aa
<b>Notes</b>	Repeated freezing and thawing is not recommended. Store working aliquots at 4°C for up to one week.



<b>Tag Info</b>	N-terminal 6xHis-tagged
<b>Mol. Weight</b>	87.0kDa
<b>Protein Length</b>	Full Length of Mature Protein

**Image**


(Tris-Glycine gel) Discontinuous SDS-PAGE (reduced) with 5% enrichment gel and 15% separation gel.

**Reconstitution**

We recommend that this vial be briefly centrifuged prior to opening to bring the contents to the bottom. Please reconstitute protein in deionized sterile water to a concentration of 0.1-1.0 mg/mL. We recommend to add 5-50% of glycerol (final concentration) and aliquot for long-term storage at -20°C/-80°C. Our default final concentration of glycerol is 50%. Customers could use it as reference.

**Shelf Life**

The shelf life is related to many factors, storage state, buffer ingredients, storage temperature and the stability of the protein itself. Generally, the shelf life of liquid form is 6 months at -20°C/-80°C. The shelf life of lyophilized form is 12 months at -20°C/-80°C.