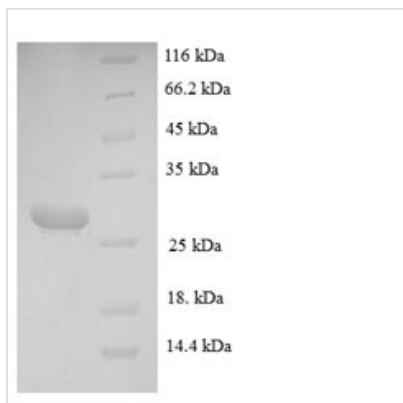




# Recombinant Mouse Mast cell protease 4 (Mcpt4)

<b>Product Code</b>	CSB-EP325157MO
<b>Relevance</b>	Has chymotrypsin-like activity. Hydrolyzes the amide bonds of synthetic substrates having Tyr and Phe residues at the P1 position. Preferentially hydrolyzes the 'Tyr-4- -Ile-5' bond of angiotensin I and the 'Phe-20- -Ala-21' bond of amyloid beta-protein, and is less active towards the 'Phe-8- -His-9' bond of angiotensin I and the 'Phe-4- -Ala-5' and 'Tyr-10- -Glu-11' bonds of amyloid beta-protein. Involved in thrombin regulation and fibronectin processing.
<b>Abbreviation</b>	Recombinant Mouse Mcpt4 protein
<b>Storage</b>	The shelf life is related to many factors, storage state, buffer ingredients, storage temperature and the stability of the protein itself. Generally, the shelf life of liquid form is 6 months at -20°C/-80°C. The shelf life of lyophilized form is 12 months at -20°C/-80°C.
<b>Uniprot No.</b>	P21812
<b>Alias</b>	MSMCPMyonase;Serosal mast cell protease
<b>Product Type</b>	Recombinant Protein
<b>Immunogen Species</b>	Mus musculus (Mouse)
<b>Purity</b>	Greater than 90% as determined by SDS-PAGE.
<b>Sequence</b>	IIGGVESRPHSRPYMAHLEITTERGFTATCGGFLITRQFVMTAAHCSGREITVTL GAHDVSKTESTQQKIKVEKQIVHPKYNFYSNLHDIMLLKLQKKAKETPSVNVIPL PRPSDFIKPGKMCRAAGWGRTGVTEPTSDTLREVKLRLIMDKACKNYWHYDY NLQVCVGSPPRKKRSAYKGDSSGPLLCAVAHGIVSYGRGDAKPPAVFTRISS YVPWINRVIKGE
<b>Research Area</b>	Others
<b>Source</b>	E.coli
<b>Target Names</b>	Mcpt4
<b>Expression Region</b>	21-246aa
<b>Notes</b>	Repeated freezing and thawing is not recommended. Store working aliquots at 4°C for up to one week.
<b>Tag Info</b>	N-terminal 6xHis-tagged
<b>Mol. Weight</b>	29.1kDa
<b>Protein Length</b>	Full Length of Mature Protein
<b>Image</b>	



(Tris-Glycine gel) Discontinuous SDS-PAGE (reduced) with 5% enrichment gel and 15% separation gel.

### Reconstitution

We recommend that this vial be briefly centrifuged prior to opening to bring the contents to the bottom. Please reconstitute protein in deionized sterile water to a concentration of 0.1-1.0 mg/mL. We recommend to add 5-50% of glycerol (final concentration) and aliquot for long-term storage at -20°C/-80°C. Our default final concentration of glycerol is 50%. Customers could use it as reference.

### Shelf Life

The shelf life is related to many factors, storage state, buffer ingredients, storage temperature and the stability of the protein itself. Generally, the shelf life of liquid form is 6 months at -20°C/-80°C. The shelf life of lyophilized form is 12 months at -20°C/-80°C.