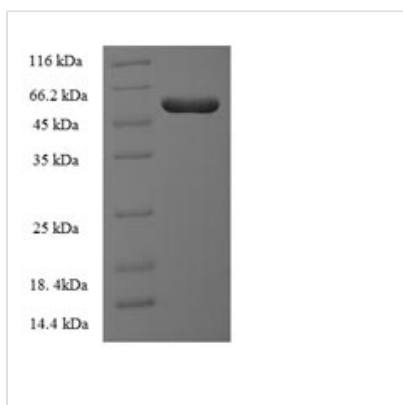




Recombinant Human Integrin-linked kinase-associated serine/threonine phosphatase 2C (ILKAP)

Product Code	CSB-EP011686HU
Relevance	Protein phosphatase that may play a role in regulation of cell cycle progression via dephosphorylation of its substrates whose appropriate phosphorylation states might be crucial for cell proliferation. Selectively associates with integrin linked kinase (ILK), to modulate cell adhesion and growth factor signaling. Inhibits the ILK-GSK3B signaling axis and may play an important role in inhibiting oncogenic transformation.
Abbreviation	Recombinant Human ILKAP protein
Storage	The shelf life is related to many factors, storage state, buffer ingredients, storage temperature and the stability of the protein itself. Generally, the shelf life of liquid form is 6 months at -20°C/-80°C. The shelf life of lyophilized form is 12 months at -20°C/-80°C.
Uniprot No.	Q9H0C8
Product Type	Recombinant Protein
Immunogen Species	Homo sapiens (Human)
Purity	Greater than 90% as determined by SDS-PAGE.
Sequence	MDLFGDLPEPERSPRPAAGKEAQKGPLLFDDLPPASSTDSGSGGPLLFDDLPPASSGDSGSLATSISQMVKTEGKGAKRKTSEEEKNGSEELVEKKVCKASSVIFGLKGYVAERKGEREEMQDAHVILNDITEECRPPSSLITRVSYFAVFDGHGGIRASKFAAQNLHQNLIRKFKPGDVISVEKTVKRCLLDTFKHTDEEFLKQASSQKPAWKDGGSTATCVLAVDNILYIANLGDSTRAILCRYNEESQKHAALSLSKEHNPTQYERMRIQKAGGNVRDGRVLGVLEVSRSIGDGQYKRCGVTSVPDIRRCQLTPNDRFILLACDGLFKVFTPEEAVNFILSCLEDEKIQTREGKSAADARYEAACNRLANKAVQRGSADNVTVMVVRIGH
Research Area	Signal Transduction
Source	E.coli
Target Names	ILKAP
Expression Region	1-392aa
Notes	Repeated freezing and thawing is not recommended. Store working aliquots at 4°C for up to one week.
Tag Info	N-terminal 6xHis-SUMO-tagged
Mol. Weight	58.9kDa
Protein Length	Full Length
Image	



(Tris-Glycine gel) Discontinuous SDS-PAGE (reduced) with 5% enrichment gel and 15% separation gel.

Reconstitution

We recommend that this vial be briefly centrifuged prior to opening to bring the contents to the bottom. Please reconstitute protein in deionized sterile water to a concentration of 0.1-1.0 mg/mL. We recommend to add 5-50% of glycerol (final concentration) and aliquot for long-term storage at -20°C/-80°C. Our default final concentration of glycerol is 50%. Customers could use it as reference.

Shelf Life

The shelf life is related to many factors, storage state, buffer ingredients, storage temperature and the stability of the protein itself. Generally, the shelf life of liquid form is 6 months at -20°C/-80°C. The shelf life of lyophilized form is 12 months at -20°C/-80°C.