



Recombinant Human Toll-like receptor 2 (TLR2), partial

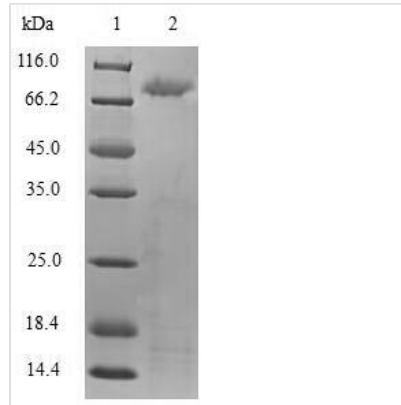
Product Code	CSB-EP023601HU1
Relevance	Cooperates with LY96 to mediate the innate immune response to bacterial lipoproteins and other microbial cell wall components. Cooperates with TLR1 or TLR6 to mediate the innate immune response to bacterial lipoproteins or lipopeptides. Acts via MYD88 and TRAF6, leading to NF-kappa-B activation, cytokine secretion and the inflammatory response. May also promote apoptosis in response to lipoproteins. Recognizes mycoplasmal macrophage-activating lipopeptide-2kD (MALP-2), soluble tuberculosis factor (STF), phenol-soluble modulins (PSM) and B.burgdorferi outer surface protein A lipoprotein (OspA-L) cooperatively with TLR6.
Abbreviation	Recombinant Human TLR2 protein, partial
Storage	The shelf life is related to many factors, storage state, buffer ingredients, storage temperature and the stability of the protein itself. Generally, the shelf life of liquid form is 6 months at -20°C/-80°C. The shelf life of lyophilized form is 12 months at -20°C/-80°C.
Uniprot No.	O60603
Product Type	Recombinant Proteins
Immunogen Species	Homo sapiens (Human)
Purity	Greater than 90% as determined by SDS-PAGE.
Sequence	KEESSNQASLSCDRNGICKGSSGSLNSIPSGLTEAVKSLDLSNNRITYISNSDL QRCVNLQALVLTSGINTIEEDSFSSLGSLEHLDLSYNYLSNLSSSWFKPLSSL TFLNLLGNPYKTLGETSLFSLTKLQILRVGNMDTFTKIQRKDFAGLTFLEELEI DASDLQSYEPKSLKSIQNVSHLILHMKQHILLLEIFVDVTSSVECLELRDLDLDTF HFSELSTGETNSLIKKFTFRNVKITDESLFQVMKLLNQISGLLELEFDDCTLNGV GNFRASDNDRVIDPGKVETLTIRRLHIPRFYLFYDLSTLYSLTERVKRITVENSK VFLVPCLLSQHLSLEYLDLSENLMVEEYLKNSACEDAWPSLQTLILRQNHLS LEKTGETLLTLKNLTNIDISKNSFHSMPEKTCQWPEKMKYLNLSSTRIHSVTGCIP KTLEILDVSNNNLNLFSNLNLPQLKELYISRNKLMTLPDASLLPMLLVLKISRNAIT FSKEQLDSFHTLKTLEAGGNFICSCFELSFTQEQQALAKVLIDWPANYLCDSP SHVRGQQVQDVRLSVSECHRT
Research Area	Immunology
Source	E.coli
Target Names	TLR2
Expression Region	19-588aa
Notes	Repeated freezing and thawing is not recommended. Store working aliquots at 4°C for up to one week.
Tag Info	N-terminal 6xHis-SUMO-tagged



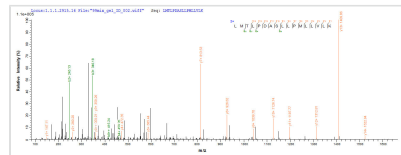
Mol. Weight 80.4kDa

Protein Length Partial

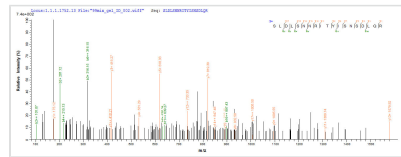
Image



(Tris-Glycine gel) Discontinuous SDS-PAGE (reduced) with 5% enrichment gel and 15% separation gel.



Based on the SEQUEST from database of E.coli host and target protein, the LC-MS/MS Analysis result of CSB-EP023601HU1 could indicate that this peptide derived from E.coli-expressed Homo sapiens (Human) TLR2.



Based on the SEQUEST from database of E.coli host and target protein, the LC-MS/MS Analysis result of CSB-EP023601HU1 could indicate that this peptide derived from E.coli-expressed Homo sapiens (Human) TLR2.

Shelf Life

The shelf life is related to many factors, storage state, buffer ingredients, storage temperature and the stability of the protein itself. Generally, the shelf life of liquid form is 6 months at -20°C/-80°C. The shelf life of lyophilized form is 12 months at -20°C/-80°C.