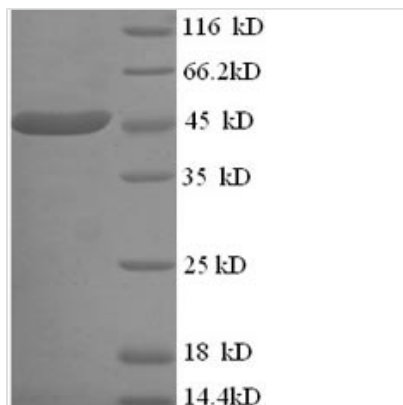


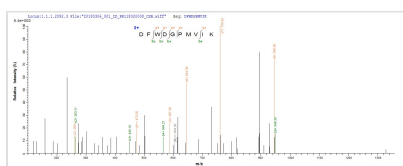


Recombinant Escherichia coli O9:H4 L-lactate dehydrogenase (IldD)

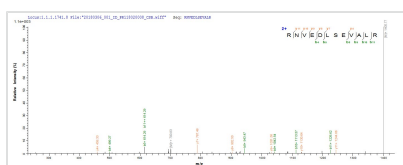
Product Code	CSB-EP421066EJF
Relevance	Catalyzes the conversion of L-lactate to pyruvate. Is coupled to the respiratory chain.
Abbreviation	Recombinant E.coli O9:H4 IldD protein
Storage	The shelf life is related to many factors, storage state, buffer ingredients, storage temperature and the stability of the protein itself. Generally, the shelf life of liquid form is 6 months at -20°C/-80°C. The shelf life of lyophilized form is 12 months at -20°C/-80°C.
Uniprot No.	A8A670
Product Type	Recombinant Protein
Immunogen Species	Escherichia coli O9:H4 (strain HS)
Purity	≥ 90% as determined by SDS-PAGE.
Sequence	MIISAASDYRAAAQRILPPFLFHYMDGGAYSEYTLRRNVEDLSEVALRQRILKN MSDLSLETTLFNEKLSMPVALAPVGLCGMYARRGEVQAAKAADAHGIPFTLST VSVCPIEEVAPAIAKRPMWFQLYVLRDRGFMRNALERAKAAGCSTLVFTVDMPT PGARYRDAHSGMSGPNAAMRRYLQAVTHPQWAWDVGLNGRPHDLGNISAY LGKPTGLEDYIGWLGNNFDPSISWKDLEWIRDFWDGPMVIKGILDPEDARDAV RFGADGIVVSNHGGRQLDGVLSARALPAIADAVKGDIAILADSGIRNGLDVVR MIALGADTVLLGRAFLYALATAGQAGVANLLNLIKEMKVAMTLTGAKSISEITQ DSLVQGLGKELPAALAPMAKGNA
Research Area	Others
Source	E.coli
Target Names	IldD
Expression Region	1-396aa
Notes	Repeated freezing and thawing is not recommended. Store working aliquots at 4°C for up to one week.
Tag Info	N-terminal 6xHis-tagged
Mol. Weight	46.7kDa
Protein Length	Full Length
Image	



(Tris-Glycine gel) Discontinuous SDS-PAGE (reduced) with 5% enrichment gel and 15% separation gel.



Based on the SEQUEST from database of E.coli host and target protein, the LC-MS/MS Analysis result of CSB-EP421066EJF could indicate that this peptide derived from E.coli-expressed Escherichia coli O9:H4 (strain HS) IIdD.



Based on the SEQUEST from database of E.coli host and target protein, the LC-MS/MS Analysis result of CSB-EP421066EJF could indicate that this peptide derived from E.coli-expressed Escherichia coli O9:H4 (strain HS) IIdD.

Reconstitution

We recommend that this vial be briefly centrifuged prior to opening to bring the contents to the bottom. Please reconstitute protein in deionized sterile water to a concentration of 0.1-1.0 mg/mL. We recommend to add 5-50% of glycerol (final concentration) and aliquot for long-term storage at -20°C/-80°C. Our default final concentration of glycerol is 50%. Customers could use it as reference.

Shelf Life

The shelf life is related to many factors, storage state, buffer ingredients, storage temperature and the stability of the protein itself. Generally, the shelf life of liquid form is 6 months at -20°C/-80°C. The shelf life of lyophilized form is 12 months at -20°C/-80°C.