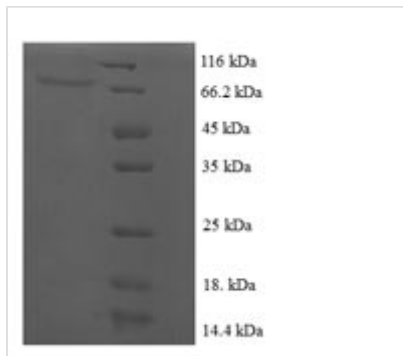


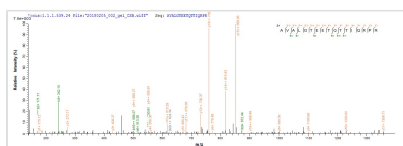


Recombinant Human papillomavirus type 16 Regulatory protein E2 (E2)

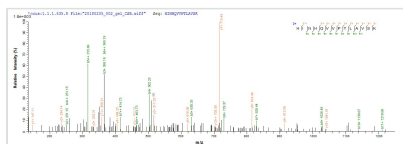
Product Code	CSB-EP365852HML
Relevance	Plays an accessory role in initiation of DNA replication. A dimer of E2 interacts with a dimer of E1 in order to improve specificity of E1 DNA binding activity. Once the complex recognizes and binds DNA at specific sites, the E2 dimer is removed from DNA. E2 also regulates viral transcription through binding to the E2RE response element (5'-ACCNNNNNGGT-3') present in multiple copies in the regulatory regions of the viral genome. Activates or represses transcription depending on E2RE's position with regards to proximal promoter elements including the TATA-box. Repression occurs by sterically hindering the assembly of the transcription initiation complex.
Storage	The shelf life is related to many factors, storage state, buffer ingredients, storage temperature and the stability of the protein itself. Generally, the shelf life of liquid form is 6 months at -20°C/-80°C. The shelf life of lyophilized form is 12 months at -20°C/-80°C.
Uniprot No.	P03120
Product Type	Recombinant Protein
Immunogen Species	Human papillomavirus type 16
Purity	Greater than 90% as determined by SDS-PAGE.
Sequence	METLCQRLNVCQDKILTHYENDSTDLRDHIDYWKHMRLECAIYYKAREMGFKH INHQQVPTLAVSKNKALQAIQLTLETIYNSQYSNEKWTLQDVSLEVYLTAPTG CIKKHGYTVEVQFDGDCNTMHYTNWTHIYICEEASVTVVEGQVDYYGLYYVH EGIRTYFVQFKDDAEKYSKNKVWEVHAGGQVILCPTSVFSSNEVSSPEIIRQHL ANHPAATHTKAVALGTEETQTTIQRPRSEPDTGNPCHTTKLLHRDSVDSAPILT AFNSSHKGRINCNSNTTPIVHLKGDANTLKCLRYRFKKHCTLYTAVSSTWHWT GHNVKHKSAIVTLTYDSEWQRDQFLSQVKIPKTITVSTGFMSI
Research Area	Epigenetics and Nuclear Signaling
Source	E.coli
Target Names	E2
Expression Region	1-365aa
Notes	Repeated freezing and thawing is not recommended. Store working aliquots at 4°C for up to one week.
Tag Info	N-terminal GST-tagged
Mol. Weight	68.8 kDa
Protein Length	Full Length
Image	



(Tris-Glycine gel) Discontinuous SDS-PAGE (reduced) with 5% enrichment gel and 15% separation gel.



Based on the SEQUEST from database of E.coli host and target protein, the LC-MS/MS Analysis result of CSB-EP365852HML could indicate that this peptide derived from E.coli-expressed Homo sapiens (Human) E2.



Based on the SEQUEST from database of E.coli host and target protein, the LC-MS/MS Analysis result of CSB-EP365852HML could indicate that this peptide derived from E.coli-expressed Homo sapiens (Human) E2.

Reconstitution

We recommend that this vial be briefly centrifuged prior to opening to bring the contents to the bottom. Please reconstitute protein in deionized sterile water to a concentration of 0.1-1.0 mg/mL. We recommend to add 5-50% of glycerol (final concentration) and aliquot for long-term storage at -20°C/-80°C. Our default final concentration of glycerol is 50%. Customers could use it as reference.

Shelf Life

The shelf life is related to many factors, storage state, buffer ingredients, storage temperature and the stability of the protein itself. Generally, the shelf life of liquid form is 6 months at -20°C/-80°C. The shelf life of lyophilized form is 12 months at -20°C/-80°C.