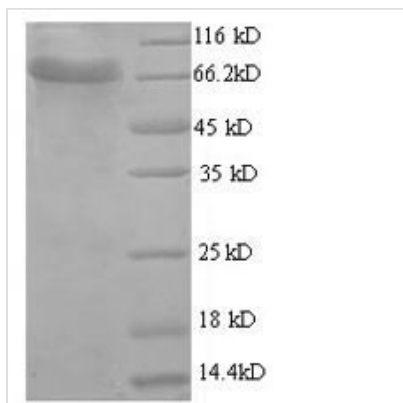




Recombinant Bovine Acetylcholinesterase (ACHE)

Product Code	CSB-EP001154BO
Relevance	Terminates signal transduction at the neuromuscular junction by rapid hydrolysis of the acetylcholine released into the synaptic cleft.
Abbreviation	Recombinant Bovine ACHE protein
Storage	The shelf life is related to many factors, storage state, buffer ingredients, storage temperature and the stability of the protein itself. Generally, the shelf life of liquid form is 6 months at -20°C/-80°C. The shelf life of lyophilized form is 12 months at -20°C/-80°C.
Uniprot No.	P23795
Product Type	Recombinant Protein
Immunogen Species	Bos taurus (Bovine)
Purity	≥ 90% as determined by SDS-PAGE.
Sequence	EGPEDPELLVMVRGGRLRGLRLMAPRGPVSAFLGIPFAEPPVGPVRRFLPPEPK RPWPGVLNATAFQSVCYQYVDTLYPGFEGTEMWNP NRELSEDCLYLNWVTP YPRPSSPTPVLVWIYGGGFYSGASSLDVYDGRFLTQAEGTVLVS MN YRVGAF GFLALPGSREAPGNVGLLDQRLALQWVQENVA AFGGDPTSVTLFGESAGAAS VGMHLLSPPSRGLFHRAVLQSGAPNGPWATVGVGEARRRATLLARLVGCPP GGAGGNDELVA CLRARPAQDLVDHEWRVLPQESVFRFSFVPVVDGDFLSDT PEALINAGDFHGLQVLVGVVKDEGSYFLVYGAPGFSKDNE SLISRAQFLAGVR VGVPQASDLAAEAVVLHYTDWLHPEDPARLREALSDVVDHNVVCPVAQLAG RLAAQGARVYAYIFEHRASTLSWPLWMGVPHGYEIEFIFGLPLEPSLNYTIEER TFAQRLMRYWANFARTGDPNDPRDPKAPQWPPYTAGAQQYVSLNLRPLEVR RGLRAQACAFWNRFLPKLLSATDTLDEAERQWKA EFHRWSSY MVHWKNQFD HYSKQDRCS DL
Research Area	Others
Source	E.coli
Target Names	ACHE
Expression Region	31-613aa
Notes	Repeated freezing and thawing is not recommended. Store working aliquots at 4°C for up to one week.
Tag Info	N-terminal GST-tagged
Mol. Weight	91.5kDa
Protein Length	Full Length of Mature Protein
Image	



(Tris-Glycine gel) Discontinuous SDS-PAGE (reduced) with 5% enrichment gel and 15% separation gel.

Reconstitution

We recommend that this vial be briefly centrifuged prior to opening to bring the contents to the bottom. Please reconstitute protein in deionized sterile water to a concentration of 0.1-1.0 mg/mL. We recommend to add 5-50% of glycerol (final concentration) and aliquot for long-term storage at -20°C/-80°C. Our default final concentration of glycerol is 50%. Customers could use it as reference.

Shelf Life

The shelf life is related to many factors, storage state, buffer ingredients, storage temperature and the stability of the protein itself. Generally, the shelf life of liquid form is 6 months at -20°C/-80°C. The shelf life of lyophilized form is 12 months at -20°C/-80°C.