

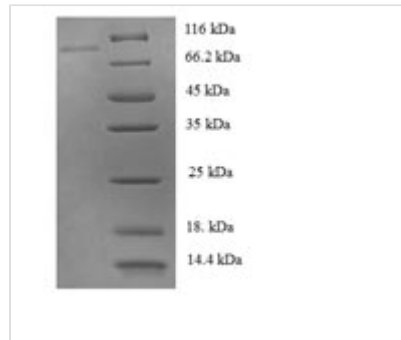


Recombinant Human Tyrosine-protein phosphatase non-receptor type 6 (PTPN6)

Product Code	CSB-EP019043HU
Relevance	Modulates signaling by tyrosine phosphorylated cell surface receptors such as KIT and the EGF receptor/EGFR. The SH2 regions may interact with other cellular components to modulate its own phosphatase activity against interacting substrates. Together with MTUS1, induces UBE2V2 expression upon angiotensin II stimulation. Plays a key role in hematopoiesis.
Abbreviation	Recombinant Human PTPN6 protein
Storage	The shelf life is related to many factors, storage state, buffer ingredients, storage temperature and the stability of the protein itself. Generally, the shelf life of liquid form is 6 months at -20°C/-80°C. The shelf life of lyophilized form is 12 months at -20°C/-80°C.
Uniprot No.	P29350
Product Type	Recombinant Proteins
Immunogen Species	Homo sapiens (Human)
Purity	Greater than 90% as determined by SDS-PAGE.
Sequence	MLSRGWFHRLDLSGLDAETLLKGRGVHGSFLARPSRKNQGDFLSLVRVGDQV THIRIQNSGDFYDLYGGEKFA TL TELVEYYTQQQGV LQDRDGTIIHLKYPLNCS DPTSERWYHGHMSGGQAETLLQAKGEPWTF L VRESLSQP GDFVLSVLS DQP KAGPGSPLRVTHIKVMCEGGRYTVGGLET FDSLTDLVEHF KKTGIEEASGAFV YLRQPYYATRVNAADIENRVLELNKKQESED TAKAGFWE EFESLQKQE VKNLH QRLEGQRPENKGNRYKNILPFDHSR VILQGRDSNIPGSDYINANYIKNQLLGP DENAKTYIASQGCLEATVNDFWQMAWQENSRVIVMTTREV EKGGRNKCVPYW PEVGMQRAYGPYSVTNCGEHD TTEYKLRTLQV SPLDNGDLIREIWHYQYLSW PDHGVPSEPGGVLSFLDQINQRQESLPHAGPIIVHCSAGIGRTGTIIVIDMLMEN ISTKGLDCDIDIQKTIQMVRAQRSGMVQTEAQYKFIYVAIAQFIETT KKKLEVLQS QKGQESEYGNITYPPAMKNAHAKASRTSSKHKEDVYENLHTKNKREEKVKKQ RSADKEKSKGSLKRK
Research Area	Cancer
Source	E.coli
Target Names	PTPN6
Expression Region	1-597aa
Notes	Repeated freezing and thawing is not recommended. Store working aliquots at 4°C for up to one week.
Tag Info	N-terminal 6xHis-SUMO-tagged
Mol. Weight	79.1kDa
Protein Length	Full Length of Isoform 2



Image



(Tris-Glycine gel) Discontinuous SDS-PAGE (reduced) with 5% enrichment gel and 15% separation gel.

Shelf Life

The shelf life is related to many factors, storage state, buffer ingredients, storage temperature and the stability of the protein itself.

Generally, the shelf life of liquid form is 6 months at -20°C/-80°C. The shelf life of lyophilized form is 12 months at -20°C/-80°C.