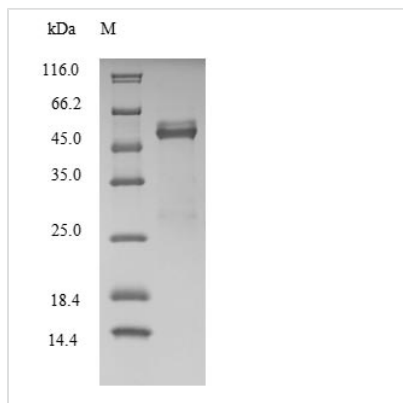




Recombinant Human Fos-related antigen 2 (FOSL2)

Product Code	CSB-EP008793HU
Relevance	Controls osteoclast survival and size. As a dimer with JUN, activates LIF transcription. Activates CEBPB transcription in PGE2-activated osteoblasts.
Abbreviation	Recombinant Human FOSL2 protein
Storage	The shelf life is related to many factors, storage state, buffer ingredients, storage temperature and the stability of the protein itself. Generally, the shelf life of liquid form is 6 months at -20°C/-80°C. The shelf life of lyophilized form is 12 months at -20°C/-80°C.
Uniprot No.	P15408
Product Type	Recombinant Protein
Immunogen Species	Homo sapiens (Human)
Purity	Greater than 90% as determined by SDS-PAGE.
Sequence	MYQDYPGNFDTSSRGSSGSPAHAESYSSGGGGQQKFRVDMPGSGSAFIPTI NAITTSQDLQWMVQPTVITSMNPYPRSHPYSPPLGLASVPGHMALPRPGVIK TIGTTVGRRRRDEQLSPEEEEEKRRIRRRERNKLAALKCRNRRRELTEKLQAETE ELEEEKSGLQKEIAELQKEKEKLEFMLVAHGVPVCKISPEERRSPPAPGLQPMR SGGGSVGAVVVKQEPLLEEDSPSSSSAGLDKAQRSVIKPISIAGGFYGEEPLHT PIVVTSTPAVTPGTSNLVFTYPSVLEQESPASPSESCSKAHRSSSSSGDQSSD SLNSPTLLAL
Research Area	Epigenetics and Nuclear Signaling
Source	E.coli
Target Names	FOSL2
Expression Region	1-326aa
Notes	Repeated freezing and thawing is not recommended. Store working aliquots at 4°C for up to one week.
Tag Info	N-terminal 6xHis-SUMO-tagged
Mol. Weight	51.2kDa
Protein Length	Full Length
Image	



(Tris-Glycine gel) Discontinuous SDS-PAGE (reduced) with 5% enrichment gel and 15% separation gel.

Reconstitution

We recommend that this vial be briefly centrifuged prior to opening to bring the contents to the bottom. Please reconstitute protein in deionized sterile water to a concentration of 0.1-1.0 mg/mL. We recommend to add 5-50% of glycerol (final concentration) and aliquot for long-term storage at $-20^{\circ}\text{C}/-80^{\circ}\text{C}$. Our default final concentration of glycerol is 50%. Customers could use it as reference.

Shelf Life

The shelf life is related to many factors, storage state, buffer ingredients, storage temperature and the stability of the protein itself. Generally, the shelf life of liquid form is 6 months at $-20^{\circ}\text{C}/-80^{\circ}\text{C}$. The shelf life of lyophilized form is 12 months at $-20^{\circ}\text{C}/-80^{\circ}\text{C}$.