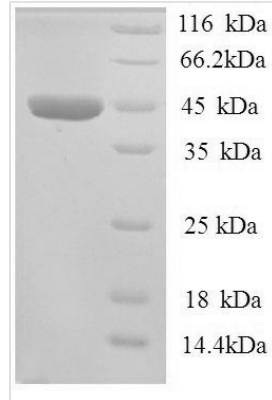




Recombinant Human All-trans-retinol dehydrogenase [NAD (+)] ADH7 (ADH7)

Product Code	CSB-EP001362HU
Relevance	Could function in retinol oxidation for the synthesis of retinoic acid, a hormone important for cellular differentiation. Medium-chain (octanol) and aromatic (m-nitrobenzaldehyde) compounds are the best substrates. Ethanol is not a good substrate but at the high ethanol concentrations reached in the digestive tract, it plays a role in the ethanol oxidation and contributes to the first pass ethanol metabolism.
Abbreviation	Recombinant Human ADH7 protein
Storage	The shelf life is related to many factors, storage state, buffer ingredients, storage temperature and the stability of the protein itself. Generally, the shelf life of liquid form is 6 months at -20°C/-80°C. The shelf life of lyophilized form is 12 months at -20°C/-80°C.
Uniprot No.	P40394
Product Type	Recombinant Proteins
Immunogen Species	Homo sapiens (Human)
Purity	≥ 90% as determined by SDS-PAGE.
Sequence	MFAEIQIQDKDRMGTAGKVIKCKAAVLWEQKQPFSEIEEVAPPKTKEVRIKILATGICRTDDHVIKGMTMVSKEFPVIVGHEATGIVESIGEGVTTVKPGDKVIPLFLPQC RECNA CRNPDGNLCIRSDITGRGVLADGTTTRFTCKGKPVHFMNTSTFTEYTV VDESSVAKIDDAAPPEKVCCLIGCGFSTGYGAAVKTKGKVPKPGSTCVVFLGGVGL LSVIMGCKSAGASRIIGIDLNKDKFEKAMAVGATECISPDKSTKPISEVLSEMTG NNVGYTFEVIHLETMIDALASCHMNYGTSVVVGVPPSAKMLTYDPMLLFTGR TWKGCVFGGLKSRDDVPKLVTEFLAKKFDLDQLITHVLPFKKISEGFELLNSGQ SIRTVLTF
Research Area	Metabolism
Source	E.coli
Target Names	ADH7
Expression Region	1-386aa
Notes	Repeated freezing and thawing is not recommended. Store working aliquots at 4°C for up to one week.
Tag Info	N-terminal 6xHis-tagged
Mol. Weight	45.5kDa
Protein Length	Full Length
Image	



(Tris-Glycine gel) Discontinuous SDS-PAGE (reduced) with 5% enrichment gel and 15% separation gel.

Shelf Life

The shelf life is related to many factors, storage state, buffer ingredients, storage temperature and the stability of the protein itself.

Generally, the shelf life of liquid form is 6 months at -20°C/-80°C. The shelf life of lyophilized form is 12 months at -20°C/-80°C.