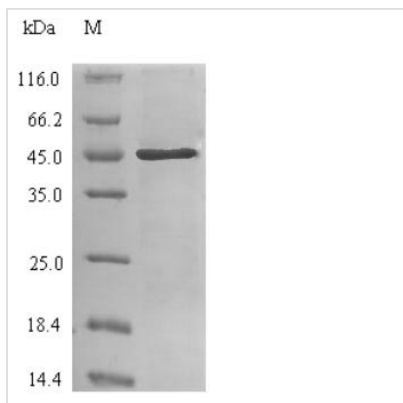




Recombinant Human Carbonic anhydrase 2 (CA2)

Product Code	CSB-EP004370HU
Relevance	Essential for bone resorption and osteoclast differentiation . Reversible hydration of carbon dioxide. Can hydrate cyanamide to urea. Involved in the regulation of fluid secretion into the anterior chamber of the eye. Contributes to intracellular pH regulation in the duodenal upper villous epithelium during proton-coupled peptide absorption. Stimulates the chloride-bicarbonate exchange activity of SLC26A6.3 Publications
Abbreviation	Recombinant Human CA2 protein
Storage	The shelf life is related to many factors, storage state, buffer ingredients, storage temperature and the stability of the protein itself. Generally, the shelf life of liquid form is 6 months at -20°C/-80°C. The shelf life of lyophilized form is 12 months at -20°C/-80°C.
Uniprot No.	P00918
Alias	Carbonate dehydratase II;Carbonic anhydrase C ;CAC;Carbonic anhydrase II ;CA-II
Product Type	Recombinant Protein
Immunogen Species	Homo sapiens (Human)
Purity	Greater than 90% as determined by SDS-PAGE.
Sequence	SHHWGYGKHNGPEHWHKDFPIAKGERQSPVDIDTHTAKYDPSLKPLSVSYDQ ATSLRILNNGHAFNVEFDDSDQKAVLKGGLDGTYRLIQFHFHWGSLDGQGS EHTVDKCKKYAAELHLVHWNTKYGDFGKAVQQPDGLAVLGLFLKVGSAKPGLQ KVVDVLDSIKTKGKSADFTNFAARGLLPESLDYWTYPGSLTTPPLLECVTWIVL KEPISVSSEQVLKFRKLNFNNGEGEPEELMVDNWRPAQPLKNRQIKASFK
Research Area	Signal Transduction
Source	E.coli
Target Names	CA2
Protein Names	Carbonate dehydratase II;Carbonic anhydrase C ;CAC;Carbonic anhydrase II ;CA-II
Expression Region	2-260aa
Notes	Repeated freezing and thawing is not recommended. Store working aliquots at 4°C for up to one week.
Tag Info	N-terminal 6xHis-SUMO-tagged
Mol. Weight	45.1 kDa
Protein Length	Full Length of Mature Protein
Image	



(Tris-Glycine gel) Discontinuous SDS-PAGE (reduced) with 5% enrichment gel and 15% separation gel.

Reconstitution

We recommend that this vial be briefly centrifuged prior to opening to bring the contents to the bottom. Please reconstitute protein in deionized sterile water to a concentration of 0.1-1.0 mg/mL. We recommend to add 5-50% of glycerol (final concentration) and aliquot for long-term storage at -20°C/-80°C. Our default final concentration of glycerol is 50%. Customers could use it as reference.

Shelf Life

The shelf life is related to many factors, storage state, buffer ingredients, storage temperature and the stability of the protein itself. Generally, the shelf life of liquid form is 6 months at -20°C/-80°C. The shelf life of lyophilized form is 12 months at -20°C/-80°C.