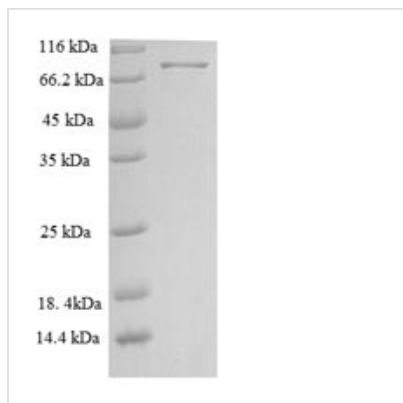




Recombinant Human Neuroepithelial cell-transforming gene 1 protein (NET1)

Product Code	CSB-EP768775HU
Relevance	Acts as guanine nucleotide exchange factor (GEF) for RhoA GTPase. May be involved in activation of the SAPK/JNK pathway Stimulates genotoxic stress-induced RHOB activity in breast cancer cells leading to their cell death.
Abbreviation	Recombinant Human NET1 protein
Storage	The shelf life is related to many factors, storage state, buffer ingredients, storage temperature and the stability of the protein itself. Generally, the shelf life of liquid form is 6 months at -20°C/-80°C. The shelf life of lyophilized form is 12 months at -20°C/-80°C.
Uniprot No.	Q7Z628
Alias	Proto-oncogene p65 Net1Rho guanine nucleotide exchange factor 8
Product Type	Recombinant Protein
Immunogen Species	Homo sapiens (Human)
Purity	≥ 90% as determined by SDS-PAGE.
Sequence	MVAHDETGGLLPIKRTIRVLDVNNQSFREQEEPSNKRVRPLARVTSLANLISPV RNGAVRRFGQTIQSFTLRGDHRSPASAKQFSSRSTVPTPAKRRSSALWSEML DITMKESLTTREIRRQEAIYEMSRGEQDLIEDLKLARKAYHDPMLKLSIMSEEEL THIFGDLDSYIPLHEDLLTRIGEATKPDGTVEQIGHILVSWLPRLNAYRGYCSNQ LAAKALLDQKKQDPRVQDFLQRCLESPFSRKLDLWSFLDIPRSRLVKYPLLLKE ILKHTPKHEPVDVQLLEDAILIQGVLS DINLKKGESECQYYIDKLEYLDEKQRDPR IEASKVLLCHGELRSKSGHKLYIFLFQDILVLRPVTRNERHSYQVYRQPIPVQE LVLEDLQDGDVRMGGSFGRGAFSSEKAKNIFRIRFHDPSPAQSHTLQANDVFH KQQWFNCIRAAIAPFQSAGSPPELQGLPELHEECEGNHPSARKLTAQRRAST VSSVTQVEVDENAYRCGSGMQMAEDSKSLKTHQTQPGIRRARDKALSGGKR KETLV
Research Area	Signal Transduction
Source	E.coli
Target Names	NET1
Expression Region	1-542aa
Notes	Repeated freezing and thawing is not recommended. Store working aliquots at 4°C for up to one week.
Tag Info	N-terminal 6xHis-SUMO-tagged
Mol. Weight	77.9kDa
Protein Length	Full Length of Isoform 2
Image	



(Tris-Glycine gel) Discontinuous SDS-PAGE (reduced) with 5% enrichment gel and 15% separation gel.

Reconstitution

We recommend that this vial be briefly centrifuged prior to opening to bring the contents to the bottom. Please reconstitute protein in deionized sterile water to a concentration of 0.1-1.0 mg/mL. We recommend to add 5-50% of glycerol (final concentration) and aliquot for long-term storage at -20°C/-80°C. Our default final concentration of glycerol is 50%. Customers could use it as reference.

Shelf Life

The shelf life is related to many factors, storage state, buffer ingredients, storage temperature and the stability of the protein itself. Generally, the shelf life of liquid form is 6 months at -20°C/-80°C. The shelf life of lyophilized form is 12 months at -20°C/-80°C.