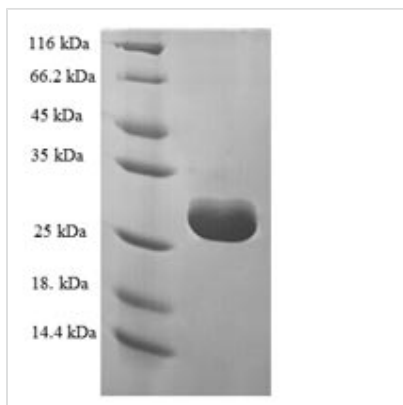


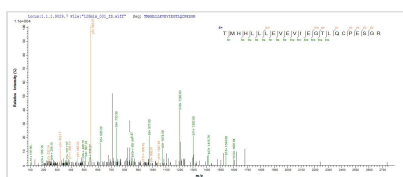


Recombinant Human tRNA methyltransferase 112 homolog (TRMT112)

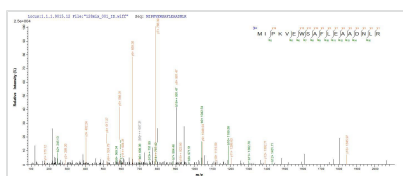
Product Code	CSB-EP883416HU
Relevance	Participates both in methylation of protein and tRNA species. The heterodimer with HK2/N6AMT1 catalyzes N5-methylation of ETF1 on 'Gln-185', using S-adenosyl L-methionine as methyl donor. The heterodimer with ALKBH8 catalyzes the methylation of 5-carboxymethyl uridine to 5-methylcarboxymethyl uridine at the wobble position of the anticodon loop in target tRNA species.
Abbreviation	Recombinant Human TRMT112 protein
Storage	The shelf life is related to many factors, storage state, buffer ingredients, storage temperature and the stability of the protein itself. Generally, the shelf life of liquid form is 6 months at -20°C/-80°C. The shelf life of lyophilized form is 12 months at -20°C/-80°C.
Uniprot No.	Q9UI30
Alias	tRNA methyltransferase 112 homolog
Product Type	Recombinant Protein
Immunogen Species	Homo sapiens (Human)
Purity	Greater than 90% as determined by SDS-PAGE.
Sequence	MKLLTHNLLSSHVRGVGSRGFPLRLQATEVRCIPVEFNPNFVARMIPKVEWSA FLEAADNLRLIQVPKGPVEGYEENEFLRTMHLLLEVEVIEGTLQCPESGRMF PISRGIPNMLLSEETES
Research Area	Metabolism
Source	E.coli
Target Names	TRMT112
Expression Region	1-125aa
Notes	Repeated freezing and thawing is not recommended. Store working aliquots at 4°C for up to one week.
Tag Info	N-terminal 6xHis-SUMO-tagged
Mol. Weight	30.2kDa
Protein Length	Full Length
Image	



(Tris-Glycine gel) Discontinuous SDS-PAGE (reduced) with 5% enrichment gel and 15% separation gel.



Based on the SEQUEST from database of E.coli host and target protein, the LC-MS/MS Analysis result of CSB-EP883416HU could indicate that this peptide derived from E.coli-expressed Homo sapiens (Human) TRMT112.



Based on the SEQUEST from database of E.coli host and target protein, the LC-MS/MS Analysis result of CSB-EP883416HU could indicate that this peptide derived from E.coli-expressed Homo sapiens (Human) TRMT112.

Reconstitution

We recommend that this vial be briefly centrifuged prior to opening to bring the contents to the bottom. Please reconstitute protein in deionized sterile water to a concentration of 0.1-1.0 mg/mL. We recommend to add 5-50% of glycerol (final concentration) and aliquot for long-term storage at -20°C/-80°C. Our default final concentration of glycerol is 50%. Customers could use it as reference.

Shelf Life

The shelf life is related to many factors, storage state, buffer ingredients, storage temperature and the stability of the protein itself. Generally, the shelf life of liquid form is 6 months at -20°C/-80°C. The shelf life of lyophilized form is 12 months at -20°C/-80°C.