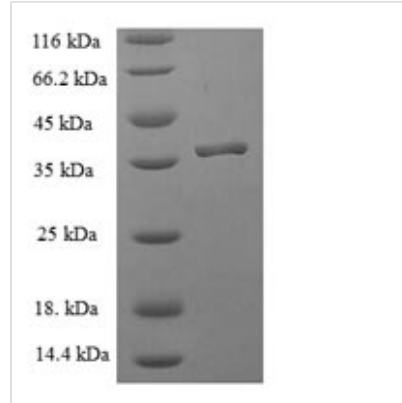




# Recombinant Human Peptidyl-tRNA hydrolase ICT1, mitochondrial (ICT1)

<b>Product Code</b>	CSB-EP613490HU
<b>Relevance</b>	Essential peptidyl-tRNA hydrolase component of the mitochondrial large ribosomal subunit. Acts as a codon-independent translation release factor that has lost all stop codon specificity and directs the termination of translation in mitochondrion, possibly in case of abortive elongation. May be involved in the hydrolysis of peptidyl-tRNAs that have been prematurely terminated and thus in the recycling of stalled mitochondrial ribosomes.
<b>Abbreviation</b>	Recombinant Human ICT1 protein
<b>Storage</b>	The shelf life is related to many factors, storage state, buffer ingredients, storage temperature and the stability of the protein itself. Generally, the shelf life of liquid form is 6 months at -20°C/-80°C. The shelf life of lyophilized form is 12 months at -20°C/-80°C.
<b>Uniprot No.</b>	Q14197
<b>Alias</b>	39S ribosomal protein L58, mitochondrial ;MRP-L58Digestion substraction 1 ;DS-1Immature colon carcinoma transcript 1 protein
<b>Product Type</b>	Recombinant Protein
<b>Immunogen Species</b>	Homo sapiens (Human)
<b>Purity</b>	Greater than 90% as determined by SDS-PAGE.
<b>Sequence</b>	LHKQKDGTEFKSIYSLDKLYPESQGSDTAWRVPNGAKQADSDIPLDRLTISYC RSSGPGGQNVNKNVNSKAEVRFHLATAEWIAEPVRQKIAITHKNKINRLGELILT SESSRYQFRNLADCLQKIRDMITEASQTPKEPTKEDVKLHRIRIENMNRERLRQ KRIHSAVKTSRRVDMD
<b>Research Area</b>	Metabolism
<b>Source</b>	E.coli
<b>Target Names</b>	MRPL58
<b>Expression Region</b>	30-206aa
<b>Notes</b>	Repeated freezing and thawing is not recommended. Store working aliquots at 4°C for up to one week.
<b>Tag Info</b>	N-terminal 6xHis-SUMO-tagged
<b>Mol. Weight</b>	36.4kDa
<b>Protein Length</b>	Full Length of Mature Protein
<b>Image</b>	



(Tris-Glycine gel) Discontinuous SDS-PAGE (reduced) with 5% enrichment gel and 15% separation gel.

### Reconstitution

We recommend that this vial be briefly centrifuged prior to opening to bring the contents to the bottom. Please reconstitute protein in deionized sterile water to a concentration of 0.1-1.0 mg/mL. We recommend to add 5-50% of glycerol (final concentration) and aliquot for long-term storage at -20°C/-80°C. Our default final concentration of glycerol is 50%. Customers could use it as reference.

### Shelf Life

The shelf life is related to many factors, storage state, buffer ingredients, storage temperature and the stability of the protein itself. Generally, the shelf life of liquid form is 6 months at -20°C/-80°C. The shelf life of lyophilized form is 12 months at -20°C/-80°C.