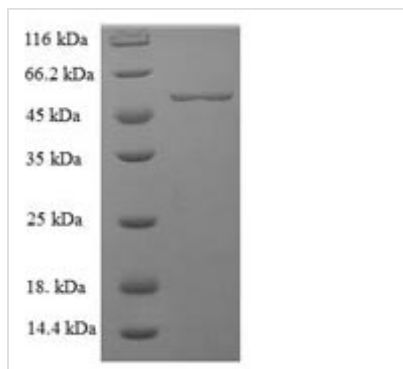




Recombinant Human Lactadherin (MFGE8)

Product Code	CSB-EP013752HU
Relevance	Plays an important role in the maintenance of intestinal epithelial homeostasis and the promotion of mucosal healing. Promotes VEGF-dependent neovascularization . Contributes to phagocytic roval of apoptotic cells in many tissues. Specific ligand for the alpha-v/beta-3 and alpha-v/beta-5 receptors. Also binds to phosphatidylserine-enriched cell surfaces in a receptor-independent manner. Zona pellucida-binding protein which may play a role in gamete interaction. Binds specifically to rotavirus and inhibits its replication.1 Publication
Abbreviation	Recombinant Human MFGE8 protein
Storage	The shelf life is related to many factors, storage state, buffer ingredients, storage temperature and the stability of the protein itself. Generally, the shelf life of liquid form is 6 months at -20°C/-80°C. The shelf life of lyophilized form is 12 months at -20°C/-80°C.
Uniprot No.	Q08431
Alias	Breast epithelial antigen BA46HMFGMFGMMilk fat globule-EGF factor 8 ;MFG-E8SED1
Product Type	Recombinant Protein
Immunogen Species	Homo sapiens (Human)
Purity	Greater than 90% as determined by SDS-PAGE.
Sequence	LDICSKNPCHNGGLCEEISQEVRGDVFPSYTCTCLKGYAGNHCETKCVEPLG MENGNIANSQIAASSVRVTFLGLQHWVPELARLN RAGMVNAWTPSSNDDNP WIQVNL LRRMWVTGVVTQGASRLASHEYLKAFKVAYSLNGHEFD FFIHDVNKK HKEFVGNWNKNAVHVNL FETPVEAQYVRLYPT SCHTACTLRFELLGCELNGC ANPLGLKNNSIPDKQITASSSYKTWGLHLFSWNPSYARLDKQGNFNAWVAGS YGNDQWLQVDLGSSKEVTGIITQGARNFGSVQFVAS YKVAYSNDSANWTEYQ DPRTGSSKIFPGNWDN HSHKKNLFETPILARYVRILPVAWHNRIALRLELLGC
Research Area	Cardiovascular
Source	E.coli
Target Names	MFGE8
Expression Region	24-387aa
Notes	Repeated freezing and thawing is not recommended. Store working aliquots at 4°C for up to one week.
Tag Info	N-terminal 6xHis-SUMO-tagged
Mol. Weight	56.8kDa
Protein Length	Full Length of Mature Protein
Image	



(Tris-Glycine gel) Discontinuous SDS-PAGE (reduced) with 5% enrichment gel and 15% separation gel.

Reconstitution

We recommend that this vial be briefly centrifuged prior to opening to bring the contents to the bottom. Please reconstitute protein in deionized sterile water to a concentration of 0.1-1.0 mg/mL. We recommend to add 5-50% of glycerol (final concentration) and aliquot for long-term storage at -20°C/-80°C. Our default final concentration of glycerol is 50%. Customers could use it as reference.

Shelf Life

The shelf life is related to many factors, storage state, buffer ingredients, storage temperature and the stability of the protein itself.

Generally, the shelf life of liquid form is 6 months at -20°C/-80°C. The shelf life of lyophilized form is 12 months at -20°C/-80°C.