

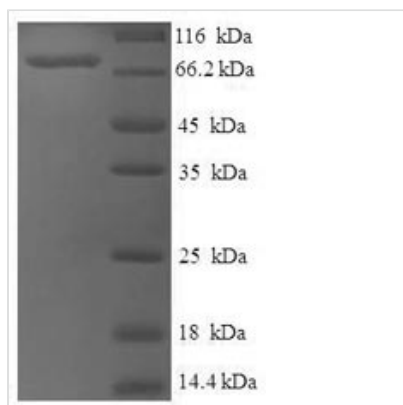


# Recombinant Human Set1/Ash2 histone methyltransferase complex subunit ASH2 (ASH2L)

<b>Product Code</b>	CSB-EP883363HU
<b>Relevance</b>	Component of the Set1/Ash2 histone methyltransferase (HMT) complex, a complex that specifically methylates 'Lys-4' of histone H3, but not if the neighboring 'Lys-9' residue is already methylated. As part of the MLL1/MLL complex it is involved in methylation and dimethylation at 'Lys-4' of histone H3. May function as a transcriptional regulator. May play a role in hatopoiesis.
<b>Abbreviation</b>	Recombinant Human ASH2L protein
<b>Storage</b>	The shelf life is related to many factors, storage state, buffer ingredients, storage temperature and the stability of the protein itself. Generally, the shelf life of liquid form is 6 months at -20°C/-80°C. The shelf life of lyophilized form is 12 months at -20°C/-80°C.
<b>Uniprot No.</b>	Q9UBL3
<b>Alias</b>	ASH2-like protein
<b>Product Type</b>	Recombinant Protein
<b>Immunogen Species</b>	Homo sapiens (Human)
<b>Purity</b>	Greater than 90% as determined by SDS-PAGE.
<b>Sequence</b>	MDTQAGSVDEENGRQLGEVELQCGICTKWFTADTFGIDTSSCLPFMTNYSFH CNVCHHSGNTYFLRKQANLKEMCLSALANLTWQSRTQDEHPKTMFSKDKDIIP FIDKYWECMTTRQRPGKMTWPNNIVKTMSKERDVFVKEHPDPGSKDPEEDY PKFGLLDQDLNIGPAYDNQKQSSAVSTSGNLNGGIAAGSSGKGRGAKRKQQ DGGTTGTTKKARSDPLFSAQRLPPHGYPLEHPFNKDGRYILAEPDPHAPDPE KLELDCWAGKPIPGDLYRACLYERVLLALHDRAPQLKISDDRLLTVVGEKGYSM VRASHGVRKGAWYFEITVDEMPDPTAARLGWSQPLGNLQAPLGYDKFSYSW RSKKGTKFHQSIGKHYSSGYGQGDVLGFYINLPEDTETAKSLPPTYKDKALIKF KSYLYFEEKDFVDKAEKSLKQTPHSEIIFYKNGVNVQGVAYKDIFEGVYFPAISLY KSCTVSINFGPCFKYPPKDLTYRPMSDMGWGAVVEHTLADVLYHVETEVDGR RSPWP
<b>Research Area</b>	Transcription
<b>Source</b>	E.coli
<b>Target Names</b>	ASH2L
<b>Expression Region</b>	1-534aa
<b>Notes</b>	Repeated freezing and thawing is not recommended. Store working aliquots at 4°C for up to one week.
<b>Tag Info</b>	N-terminal 6xHis-SUMO-tagged
<b>Mol. Weight</b>	76.2kDa
<b>Protein Length</b>	Full Length of Isoform 3



## Image



(Tris-Glycine gel) Discontinuous SDS-PAGE (reduced) with 5% enrichment gel and 15% separation gel.

## Reconstitution

We recommend that this vial be briefly centrifuged prior to opening to bring the contents to the bottom. Please reconstitute protein in deionized sterile water to a concentration of 0.1-1.0 mg/mL. We recommend to add 5-50% of glycerol (final concentration) and aliquot for long-term storage at -20°C/-80°C. Our default final concentration of glycerol is 50%. Customers could use it as reference.

## Shelf Life

The shelf life is related to many factors, storage state, buffer ingredients, storage temperature and the stability of the protein itself.

Generally, the shelf life of liquid form is 6 months at -20°C/-80°C. The shelf life of lyophilized form is 12 months at -20°C/-80°C.