

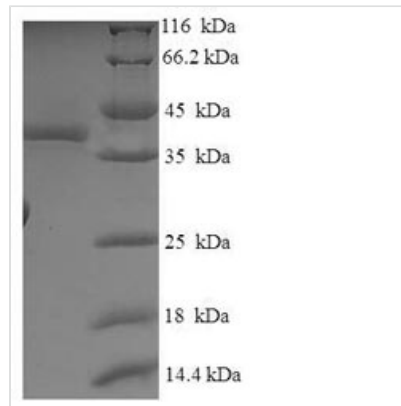


Recombinant Human SOSS complex subunit B2 (OBFC2A)

Product Code	CSB-EP850257HU
Relevance	Component of the SOSS complex, a multiprotein complex that functions downstream of the MRN complex to promote DNA repair and G2/M checkpoint. In the SOSS complex, acts as a sensor of single-stranded DNA that binds to single-stranded DNA, in particular to polypyrimidines. The SOSS complex associates with DNA lesions and influences diverse endpoints in the cellular DNA damage response including cell-cycle checkpoint activation, recombinational repair and maintenance of genomic stability. Required for efficient homologous recombination-dependent repair of double-strand breaks (DSBs) and ATM-dependent signaling pathways.
Abbreviation	Recombinant Human NABP1 protein
Storage	The shelf life is related to many factors, storage state, buffer ingredients, storage temperature and the stability of the protein itself. Generally, the shelf life of liquid form is 6 months at -20°C/-80°C. The shelf life of lyophilized form is 12 months at -20°C/-80°C.
Uniprot No.	Q96AH0
Alias	Nucleic acid-binding protein 1;Oligonucleotide/oligosaccharide-binding fold-containing protein 2A;Sensor of single-strand DNA complex subunit B2;Sensor of ssDNA subunit B2 ;SOSS-B2;Single-stranded DNA-binding protein 2 ;hSSB2
Product Type	Recombinant Protein
Immunogen Species	Homo sapiens (Human)
Purity	≥ 90% as determined by SDS-PAGE.
Sequence	MNRVNDPLIFIRDIKPGLKLNLVFIVLEIGRVTKTKDGHEVRSCKVADKTGSITI SVWDEIGGLIQPGDIIRLTRGYASMWKGCLTYTGRGGELQKIGEFMVESEV PNFSEPNPDYRGQQNKGAQSEQKNNMNSNMGTGTFGPVGNVHTGPESR EHQFSHAGRSNGRGLINPQLQGTASNQTMVTISNGRDPRAFKR
Research Area	Epigenetics and Nuclear Signaling
Source	E.coli
Target Names	NABP1
Expression Region	1-204aa
Notes	Repeated freezing and thawing is not recommended. Store working aliquots at 4°C for up to one week.
Tag Info	N-terminal 6xHis-SUMO-tagged
Mol. Weight	38.4kDa
Protein Length	Full Length



Image



(Tris-Glycine gel) Discontinuous SDS-PAGE (reduced) with 5% enrichment gel and 15% separation gel.

Reconstitution

We recommend that this vial be briefly centrifuged prior to opening to bring the contents to the bottom. Please reconstitute protein in deionized sterile water to a concentration of 0.1-1.0 mg/mL. We recommend to add 5-50% of glycerol (final concentration) and aliquot for long-term storage at -20°C/-80°C. Our default final concentration of glycerol is 50%. Customers could use it as reference.

Shelf Life

The shelf life is related to many factors, storage state, buffer ingredients, storage temperature and the stability of the protein itself. Generally, the shelf life of liquid form is 6 months at -20°C/-80°C. The shelf life of lyophilized form is 12 months at -20°C/-80°C.