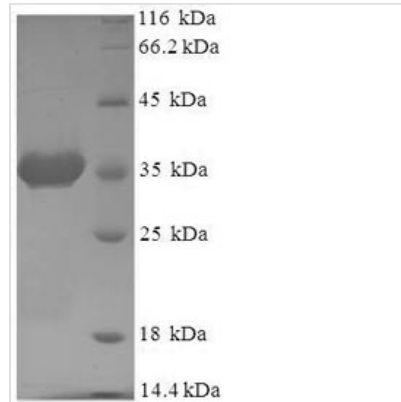




# Recombinant Human ADP-ribosylation factor 6 (ARF6)

|                          |  |
|--------------------------|--|
| <b>Product Code</b>      | CSB-EP001996HU   |
| <b>Relevance</b>         | GTP-binding protein involved in protein trafficking that regulates endocytic recycling and cytoskeleton remodeling. Required for normal completion of mitotic cytokinesis. Plays a role in the reorganization of the actin cytoskeleton and the formation of stress fibers. May also modulate vesicle budding and uncoating within the Golgi apparatus. Involved in the regulation of dendritic spine development, contributing to the regulation of dendritic branching and filopodia extension. Functions as an allosteric activator of the cholera toxin catalytic subunit, an ADP-ribosyltransferase |
| <b>Abbreviation</b>      | Recombinant Human ARF6 protein   |
| <b>Storage</b>           | The shelf life is related to many factors, storage state, buffer ingredients, storage temperature and the stability of the protein itself. Generally, the shelf life of liquid form is 6 months at -20°C/-80°C. The shelf life of lyophilized form is 12 months at -20°C/-80°C.  |
| <b>Uniprot No.</b>       | P62330   |
| <b>Product Type</b>      | Recombinant Protein  |
| <b>Immunogen Species</b> | Homo sapiens (Human)   |
| <b>Purity</b>            | ≥ 90% as determined by SDS-PAGE.   |
| <b>Sequence</b>          | MGKVLISKIFGNKEMRILMLGLDAAGKTTILYKLKLGQSVTTIPTVGFNVETVYK<br>NVKFNVDVGGQDKIRPLWRHYTGTQGLIFVDCADRDRIDEARQELHRIIN<br>DREMRDAILIFANKQDLDPDAMKPHEIQEKLGLTRIRDRNWYVQPSCATSGDGL<br>YEGLTWLTSNYKS   |
| <b>Research Area</b>     | Developmental Biology  |
| <b>Source</b>            | E.coli   |
| <b>Target Names</b>      | ARF6   |
| <b>Expression Region</b> | 1-175aa  |
| <b>Notes</b>             | Repeated freezing and thawing is not recommended. Store working aliquots at 4°C for up to one week.  |
| <b>Tag Info</b>          | N-terminal 6xHis-SUMO-tagged   |
| <b>Mol. Weight</b>       | 36.1kDa  |
| <b>Protein Length</b>    | Full Length  |
| <b>Image</b>             |  |



(Tris-Glycine gel) Discontinuous SDS-PAGE (reduced) with 5% enrichment gel and 15% separation gel.

### Reconstitution

We recommend that this vial be briefly centrifuged prior to opening to bring the contents to the bottom. Please reconstitute protein in deionized sterile water to a concentration of 0.1-1.0 mg/mL. We recommend to add 5-50% of glycerol (final concentration) and aliquot for long-term storage at -20°C/-80°C. Our default final concentration of glycerol is 50%. Customers could use it as reference.

### Shelf Life

The shelf life is related to many factors, storage state, buffer ingredients, storage temperature and the stability of the protein itself. Generally, the shelf life of liquid form is 6 months at -20°C/-80°C. The shelf life of lyophilized form is 12 months at -20°C/-80°C.