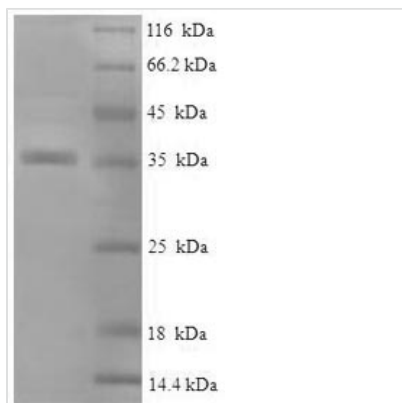


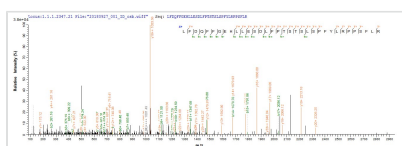


# Recombinant Human Alpha-crystallin B chain (CRYAB)

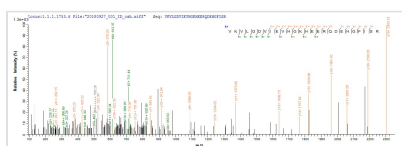
<b>Product Code</b>	CSB-EP006008HU
<b>Relevance</b>	May contribute to the transparency and refractive index of the lens. Has chaperone-like activity, preventing aggregation of various proteins under a wide range of stress conditions.
<b>Abbreviation</b>	Recombinant Human CRYAB protein
<b>Storage</b>	The shelf life is related to many factors, storage state, buffer ingredients, storage temperature and the stability of the protein itself. Generally, the shelf life of liquid form is 6 months at -20°C/-80°C. The shelf life of lyophilized form is 12 months at -20°C/-80°C.
<b>Uniprot No.</b>	P02511
<b>Alias</b>	Alpha(B)-crystallinHeat shock protein beta-5 ;HspB5Renal carcinoma antigen NY-REN-27Rosenthal fiber component
<b>Product Type</b>	Recombinant Protein
<b>Immunogen Species</b>	Homo sapiens (Human)
<b>Purity</b>	Greater than 90% as determined by SDS-PAGE.
<b>Sequence</b>	MDIAIHHPWIRRPFFPFHSPSRLFDQFFGEHLLESDFPTSTLSLSPFYLRPPSFL RAPSWFDTGLSEMRLEKDRFSVNLDVKHFSPEELKVKVLGDVIEVHGKHEER QDEHGFIREFHRKYRIPADVDPDLTITSSLSGDLTVNGPRKQVSGPERTIPIT REEKPAVTAAPKK
<b>Research Area</b>	Cancer
<b>Source</b>	E.coli
<b>Target Names</b>	CRYAB
<b>Expression Region</b>	1-175aa
<b>Notes</b>	Repeated freezing and thawing is not recommended. Store working aliquots at 4°C for up to one week.
<b>Tag Info</b>	N-terminal 6xHis-SUMO-tagged
<b>Mol. Weight</b>	36.2kDa
<b>Protein Length</b>	Full Length
<b>Image</b>	



(Tris-Glycine gel) Discontinuous SDS-PAGE (reduced) with 5% enrichment gel and 15% separation gel.



Based on the SEQUEST from database of E.coli host and target protein, the LC-MS/MS Analysis result of CSB-EP006008HU could indicate that this peptide derived from E.coli-expressed Homo sapiens (Human) CRYAB.



Based on the SEQUEST from database of E.coli host and target protein, the LC-MS/MS Analysis result of CSB-EP006008HU could indicate that this peptide derived from E.coli-expressed Homo sapiens (Human) CRYAB.

## Reconstitution

We recommend that this vial be briefly centrifuged prior to opening to bring the contents to the bottom. Please reconstitute protein in deionized sterile water to a concentration of 0.1-1.0 mg/mL. We recommend to add 5-50% of glycerol (final concentration) and aliquot for long-term storage at -20°C/-80°C. Our default final concentration of glycerol is 50%. Customers could use it as reference.

## Shelf Life

The shelf life is related to many factors, storage state, buffer ingredients, storage temperature and the stability of the protein itself.

Generally, the shelf life of liquid form is 6 months at -20°C/-80°C. The shelf life of lyophilized form is 12 months at -20°C/-80°C.