

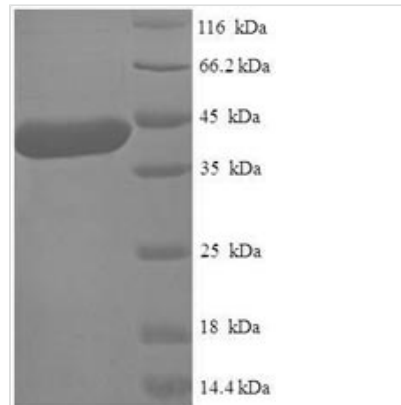


Recombinant Human Alpha N-terminal protein methyltransferase 1A (METTL11A)

| | |
|--------------------------|---|
| Product Code | CSB-EP880111HU |
| Relevance | Distributive alpha-N-methyltransferase that methylates the N-terminus of target proteins containing the N-terminal motif [Ala/Pro/Ser]-Pro-Lys when the initiator Met is cleaved. Specifically catalyzes mono-, di- or tri-methylation of exposed alpha-amino group of Ala or Ser residue in the [Ala/Ser]-Pro-Lys motif and mono- or di-methylation of Pro in the Pro-Pro-Lys motif. Some of the substrates may be primed by METTL11B-mediated monomethylation. Responsible for the N-terminal methylation of KLHL31, MYL2, MYL3, RB1, RCC1, RPL23A and SET. Required during mitosis for normal bipolar spindle formation and chromosome segregation via its action on RCC1. |
| Abbreviation | Recombinant Human NTMT1 protein |
| Storage | The shelf life is related to many factors, storage state, buffer ingredients, storage temperature and the stability of the protein itself. Generally, the shelf life of liquid form is 6 months at -20°C/-80°C. The shelf life of lyophilized form is 12 months at -20°C/-80°C. |
| Uniprot No. | Q9BV86 |
| Alias | Alpha N-terminal protein methyltransferase 1A Methyltransferase-like protein 11A N-terminal R; CC1 methyltransferase X-Pro-Lys N-terminal protein methyltransferase 1A ; NTM1A |
| Product Type | Recombinant Protein |
| Immunogen Species | Homo sapiens (Human) |
| Purity | ≥ 90% as determined by SDS-PAGE. |
| Sequence | MTSEVIEDEKQFYKAKTYWKQIPPTVDGMLGGYGHISIDINSSRKFLQRFLR EGPNKTGTSCALDCGAGIGRITKRLLLPLFREVDMDITEDFLVQAKTYLGEEG KRVRNYFCCGLQDFTPEPDSYDVIWIQWVIGHLTDQHLAEFLRRCKGSLRPNG IIVIKDNMAQEGVILDDVDSSVCRDLDVVRRRISAGLSLLAEERQENLPDEIYHV YSFALR |
| Research Area | Cell Biology |
| Source | E.coli |
| Target Names | NTMT1 |
| Expression Region | 1-223aa |
| Notes | Repeated freezing and thawing is not recommended. Store working aliquots at 4°C for up to one week. |
| Tag Info | N-terminal 6xHis-SUMO-tagged |
| Mol. Weight | 41.4kDa |
| Protein Length | Full Length |



Image



(Tris-Glycine gel) Discontinuous SDS-PAGE (reduced) with 5% enrichment gel and 15% separation gel.

Reconstitution

We recommend that this vial be briefly centrifuged prior to opening to bring the contents to the bottom. Please reconstitute protein in deionized sterile water to a concentration of 0.1-1.0 mg/mL. We recommend to add 5-50% of glycerol (final concentration) and aliquot for long-term storage at -20°C/-80°C. Our default final concentration of glycerol is 50%. Customers could use it as reference.

Shelf Life

The shelf life is related to many factors, storage state, buffer ingredients, storage temperature and the stability of the protein itself.

Generally, the shelf life of liquid form is 6 months at -20°C/-80°C. The shelf life of lyophilized form is 12 months at -20°C/-80°C.