

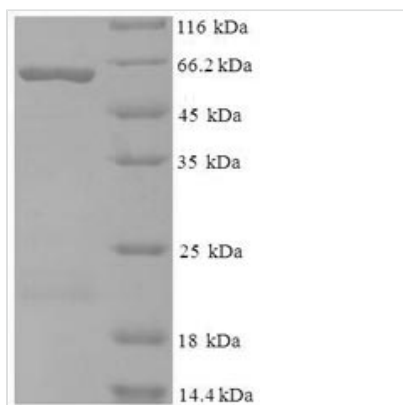


# Recombinant Human Kynurenine--oxoglutarate transaminase 1 (KYAT1)

<b>Product Code</b>	CSB-EP613699HU
<b>Relevance</b>	Catalyzes the irreversible transamination of the L-tryptophan metabolite L-kynurenine to form kynurenic acid (KA). Metabolizes the cysteine conjugates of certain halogenated alkenes and alkanes to form reactive metabolites. Catalyzes the beta-elimination of S-conjugates and Se-conjugates of L-(seleno)cysteine, resulting in the cleavage of the C-S or C-Se bond.
<b>Abbreviation</b>	Recombinant Human KYAT1 protein
<b>Storage</b>	The shelf life is related to many factors, storage state, buffer ingredients, storage temperature and the stability of the protein itself. Generally, the shelf life of liquid form is 6 months at -20°C/-80°C. The shelf life of lyophilized form is 12 months at -20°C/-80°C.
<b>Uniprot No.</b>	Q16773
<b>Alias</b>	Cysteine-S-conjugate beta-lyase (EC:4.4.1.13)Glutamine transaminase K ;GTKGlutamine--phenylpyruvate transaminase (EC:2.6.1.64)Kynurenine aminotransferase I ;KATIKynurenine--oxoglutarate transaminase I
<b>Product Type</b>	Recombinant Protein
<b>Immunogen Species</b>	Homo sapiens (Human)
<b>Purity</b>	Greater than 90% as determined by SDS-PAGE.
<b>Sequence</b>	MAKQLQARRLDGIDYNPWVEFVKLASEHDVVNLGQGFPDFPPDFAVEAFQH AVSGDFMLNQYTKTFVIIIPEFFDCYEPMTMMAGGRPVFVSLKPGPIQNGELGS SSNWQLDPMELAGKFTSRTKALVLNTPNPLGKVFSREELELVASLCQQHDV VCITDEVYQWMVYDGHQHISIASLPGMWERTLTIGSAGKTFSATGWKVGWVL GPDHIMKHLRTVHQNSVFHCPTQSQAAVAESFEREQLLFRQPSSYFVQFPQA MQRCDHMIRSLQSVGLKPIIPQGSYFLITDISDFKRKMPDLPGAVDEPYDRRF VKWMIKNKGLVAIPVSIFYSVPHQKHFDHYIRFCFVKDEATLQAMDEKLRKWK VEL
<b>Research Area</b>	Metabolism
<b>Source</b>	E.coli
<b>Target Names</b>	KYAT1
<b>Expression Region</b>	1-372aa
<b>Notes</b>	Repeated freezing and thawing is not recommended. Store working aliquots at 4°C for up to one week.
<b>Tag Info</b>	N-terminal 6xHis-SUMO-tagged
<b>Mol. Weight</b>	58.6kDa
<b>Protein Length</b>	Full Length of Isoform 2



## Image



(Tris-Glycine gel) Discontinuous SDS-PAGE (reduced) with 5% enrichment gel and 15% separation gel.

## Reconstitution

We recommend that this vial be briefly centrifuged prior to opening to bring the contents to the bottom. Please reconstitute protein in deionized sterile water to a concentration of 0.1-1.0 mg/mL. We recommend to add 5-50% of glycerol (final concentration) and aliquot for long-term storage at -20°C/-80°C. Our default final concentration of glycerol is 50%. Customers could use it as reference.

## Shelf Life

The shelf life is related to many factors, storage state, buffer ingredients, storage temperature and the stability of the protein itself. Generally, the shelf life of liquid form is 6 months at -20°C/-80°C. The shelf life of lyophilized form is 12 months at -20°C/-80°C.