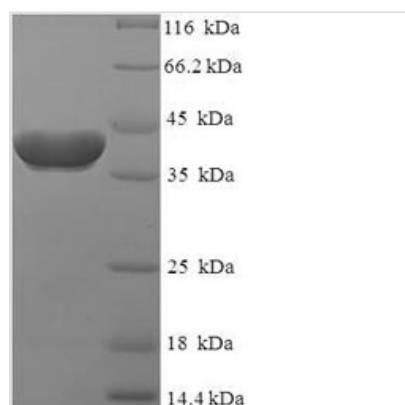




Recombinant Human Ras-related protein Rab-2A (RAB2A)

Product Code	CSB-EP019180HU
Relevance	Required for protein transport from the endoplasmic reticulum to the Golgi complex.
Abbreviation	Recombinant Human RAB2A protein
Storage	The shelf life is related to many factors, storage state, buffer ingredients, storage temperature and the stability of the protein itself. Generally, the shelf life of liquid form is 6 months at -20°C/-80°C. The shelf life of lyophilized form is 12 months at -20°C/-80°C.
Uniprot No.	P61019
Product Type	Recombinant Protein
Immunogen Species	Homo sapiens (Human)
Purity	≥ 90% as determined by SDS-PAGE.
Sequence	AYAYLFKYIIIGDTGVGKSCLLLQFTDKRFQPVHDLTIGVEFGARMITIDGKQIKL QIWDTAGQESFRSITRSYYRGAAGALLVYDITRRDTFNHLTTWLEDARQHSNS NMVIMLIGNKSDLESRREVKKKEEGEAFAREHGLIFMETSAKTASNVEEAFINTA KEIYEKIQEGVFDINNEANGIKIGPQHAATNATHAGNQGGQQAGGGCC
Research Area	Cancer
Source	E.coli
Target Names	RAB2A
Expression Region	2-212aa
Notes	Repeated freezing and thawing is not recommended. Store working aliquots at 4°C for up to one week.
Tag Info	N-terminal 6xHis-SUMO-tagged
Mol. Weight	39.4kDa
Protein Length	Full Length of Mature Protein

Image



(Tris-Glycine gel) Discontinuous SDS-PAGE (reduced) with 5% enrichment gel and 15% separation gel.



Reconstitution

We recommend that this vial be briefly centrifuged prior to opening to bring the contents to the bottom. Please reconstitute protein in deionized sterile water to a concentration of 0.1-1.0 mg/mL. We recommend to add 5-50% of glycerol (final concentration) and aliquot for long-term storage at -20°C/-80°C. Our default final concentration of glycerol is 50%. Customers could use it as reference.

Shelf Life

The shelf life is related to many factors, storage state, buffer ingredients, storage temperature and the stability of the protein itself. Generally, the shelf life of liquid form is 6 months at -20°C/-80°C. The shelf life of lyophilized form is 12 months at -20°C/-80°C.