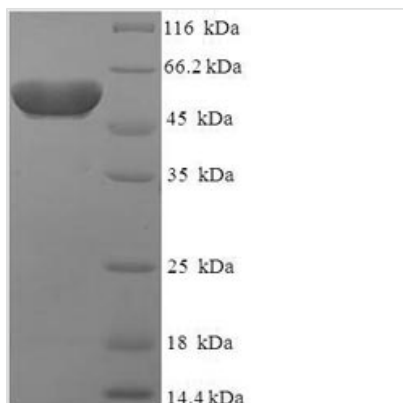




# Recombinant Human Protein atonal homolog 1 (ATOH1)

<b>Product Code</b>	CSB-EP846107HU
<b>Relevance</b>	Transcriptional regulator. Activates E box-dependent transcription in collaboration with TCF3/E47, but the activity is completely antagonized by the negative regulator of neurogenesis HES1. Plays a role in the differentiation of subsets of neural cells by activating E box-dependent transcription .
<b>Abbreviation</b>	Recombinant Human ATOH1 protein
<b>Storage</b>	The shelf life is related to many factors, storage state, buffer ingredients, storage temperature and the stability of the protein itself. Generally, the shelf life of liquid form is 6 months at -20°C/-80°C. The shelf life of lyophilized form is 12 months at -20°C/-80°C.
<b>Uniprot No.</b>	Q92858
<b>Alias</b>	Class A basic helix-loop-helix protein 14 ;bHLHa14Helix-loop-helix protein hATH-1 ;hATH1
<b>Product Type</b>	Recombinant Protein
<b>Immunogen Species</b>	Homo sapiens (Human)
<b>Purity</b>	≥ 90% as determined by SDS-PAGE.
<b>Sequence</b>	MSRLLHAEWEAEVKELGDHHRQPQPHHLPQPPPPQPPATLQAREHPVYPP ELSLLDSTDPRAWLAPTLQGICTARAAQYLLHSPELGASEAAAPRDEVDGRGE LVRSSGGASSSKSPGPVKVREQLCKLKGGVVVDELGCSRQRAPSSKQVNG VQKQRRLAANARERRRMHGLNHAFDQLRNVIPSFNNDKLSKYETLQMAQIYI NALSELLQTPSGGEQPPPPASCKSDHHLRRTAASYEGGAGNATAAGAQQQA SGGSQRPTPPGSCRTRFSAPASAGGYSVQLDALHFSTFEDSALTAMMAQKNL SPSLPGSILQPVQEENSKTSPRSHRSDGEFSPHSHYSDSDEAS
<b>Research Area</b>	Developmental Biology
<b>Source</b>	E.coli
<b>Target Names</b>	ATOH1
<b>Expression Region</b>	1-354aa
<b>Notes</b>	Repeated freezing and thawing is not recommended. Store working aliquots at 4°C for up to one week.
<b>Tag Info</b>	N-terminal 6xHis-SUMO-tagged
<b>Mol. Weight</b>	54.2kDa
<b>Protein Length</b>	Full Length
<b>Image</b>	



(Tris-Glycine gel) Discontinuous SDS-PAGE (reduced) with 5% enrichment gel and 15% separation gel.

### Reconstitution

We recommend that this vial be briefly centrifuged prior to opening to bring the contents to the bottom. Please reconstitute protein in deionized sterile water to a concentration of 0.1-1.0 mg/mL. We recommend to add 5-50% of glycerol (final concentration) and aliquot for long-term storage at -20°C/-80°C. Our default final concentration of glycerol is 50%. Customers could use it as reference.

### Shelf Life

The shelf life is related to many factors, storage state, buffer ingredients, storage temperature and the stability of the protein itself. Generally, the shelf life of liquid form is 6 months at -20°C/-80°C. The shelf life of lyophilized form is 12 months at -20°C/-80°C.