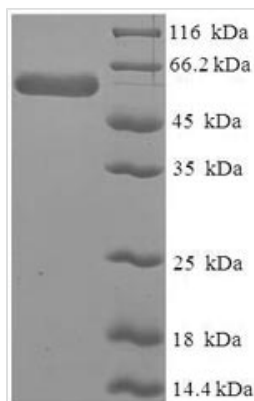




Recombinant Human Leukocyte elastase inhibitor (SERPINB1)

Product Code	CSB-EP021065HU
Relevance	Regulates the activity of the neutrophil proteases elastase, cathepsin G, proteinase-3, chymase, chymotrypsin, and kallikrein-3. Also functions as a potent intracellular inhibitor of granzyme H.
Abbreviation	Recombinant Human SERPINB1 protein
Storage	The shelf life is related to many factors, storage state, buffer ingredients, storage temperature and the stability of the protein itself. Generally, the shelf life of liquid form is 6 months at -20°C/-80°C. The shelf life of lyophilized form is 12 months at -20°C/-80°C.
Uniprot No.	P30740
Alias	Monocyte/neutrophil elastase inhibitor ;EI ;M/NEIPeptidase inhibitor 2 ;PI-2Serpine B1
Product Type	Recombinant Protein
Immunogen Species	Homo sapiens (Human)
Purity	Greater than 90% as determined by SDS-PAGE.
Sequence	MEQLSSANTRFALDLFLALSENNPAGNIFISPFSSISSAMAMVFLGTRGNTAAQL SKTFHFNTVEEVHSRFQSLNADINKRGASYILKLANRLYGEKTYNFLPEFLVST QKTYGADLASVDFQHASEDARKTINQWVKGQTEGKIPELLASGMVDNMTKLV LVNAIYFKGNWKDKFMKEATTNAPFRLNKKDRKTVKMMYQKKKFAYGYIEDLK CRVLELPYQGEELSMVILLPDDIEDESTGLKKIEEQLTLEKLHEWTKPENLDFIE VNVSLPRFKLEESYTLNSDLARLGVQDLFNSSKADLSGMSGARDIFISKIVHKS FVEVNEEGTEAAAATAGIATFCMLMPEENFTADHPFLFFIRHNSSGSILFLGRF SSP
Research Area	Cardiovascular
Source	E.coli
Target Names	SERPINB1
Expression Region	1-379aa
Notes	Repeated freezing and thawing is not recommended. Store working aliquots at 4°C for up to one week.
Tag Info	N-terminal 6xHis-SUMO-tagged
Mol. Weight	58.7kDa
Protein Length	Full Length
Image	



(Tris-Glycine gel) Discontinuous SDS-PAGE (reduced) with 5% enrichment gel and 15% separation gel.

Reconstitution

We recommend that this vial be briefly centrifuged prior to opening to bring the contents to the bottom. Please reconstitute protein in deionized sterile water to a concentration of 0.1-1.0 mg/mL. We recommend to add 5-50% of glycerol (final concentration) and aliquot for long-term storage at -20°C/-80°C. Our default final concentration of glycerol is 50%. Customers could use it as reference.

Shelf Life

The shelf life is related to many factors, storage state, buffer ingredients, storage temperature and the stability of the protein itself. Generally, the shelf life of liquid form is 6 months at -20°C/-80°C. The shelf life of lyophilized form is 12 months at -20°C/-80°C.