



Recombinant Human PC4 and SFRS1-interacting protein (PSIP1)

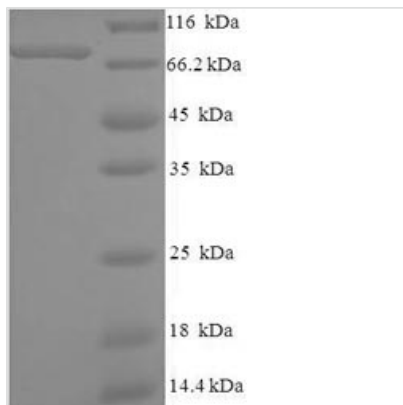
Product Code	CSB-EP018860HU
Relevance	Transcriptional coactivator involved in neuroepithelial st cell differentiation and neurogenesis. Involved in particular in lens epithelial cell gene regulation and stress responses. May play an important role in lens epithelial to fiber cell terminal differentiation. May play a protective role during stress-induced apoptosis. Isoform 2 is a more general and stronger transcriptional coactivator. Isoform 2 may also act as an adapter to coordinate pre-mRNA splicing. Cellular cofactor for lentiviral integration.
Abbreviation	Recombinant Human PSIP1 protein
Storage	The shelf life is related to many factors, storage state, buffer ingredients, storage temperature and the stability of the protein itself. Generally, the shelf life of liquid form is 6 months at -20°C/-80°C. The shelf life of lyophilized form is 12 months at -20°C/-80°C.
Uniprot No.	O75475
Alias	CLL-associated antigen KW-7Dense fine speckles 70 kDa protein ;DFS 70Lens epithelium-derived growth factorTranscriptional coactivator p75/p52
Product Type	Recombinant Protein
Immunogen Species	Homo sapiens (Human)
Purity	Greater than 90% as determined by SDS-PAGE.
Sequence	MTRDFKPGDLIFAKMKGYPHWPARVDEVPDGAVKPPTNKLPIFFFGTHETAFL GPKDIFPYSENKEKYGKPNKRKGFNEGLWEIDNNPKVKFSSQQAATKQSNAS SDVEVEEKETSVSKEDTDHEEKASNEVDTKAVDITTPKAARRGRKRKAQVE TEEAGVVTTATASVNLKVSPKRGRPAATEVKIPKPRGRPKMVKQPCPSESDIIT EEDKSKKKKGQEEKQPKKQPKKDEEGQKEEDKPRKEPDKKEGKKEVESKRKN LAKTGVTSTSDSEEEGDDQEGEKKRKGGRNFTAHRRNMLKGQHEKEAADR KRKQEEQMETEQQNKDEGKPEVKKVEKKRETSMD SRLQRIHAEIKNSLKIDN LDVNRCIEALDELASLQVTMQQAQKHTEMITTLKKIRRFKVSQVIMEKSTMLYN KFKNMFLVGE GDSVITQVLNKS LAEQRQHEEANKTKDQGKKGPNKKLEKEQT GSKTLN GGSDAQDGNQPQHNGESNEDSKDNHEASTKKKPSSEERETEISLKD STLDN
Research Area	Immunology
Source	E.coli
Target Names	PSIP1
Expression Region	1-530aa
Notes	Repeated freezing and thawing is not recommended. Store working aliquots at 4°C for up to one week.
Tag Info	N-terminal 6xHis-SUMO-tagged



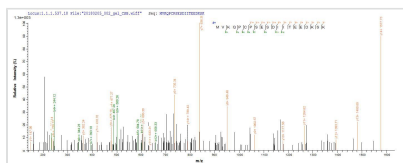
Mol. Weight 76.1kDa

Protein Length Full Length

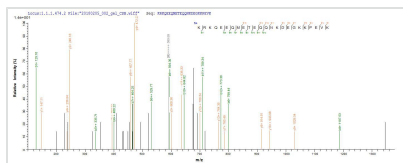
Image



(Tris-Glycine gel) Discontinuous SDS-PAGE (reduced) with 5% enrichment gel and 15% separation gel.



Based on the SEQUEST from database of E.coli host and target protein, the LC-MS/MS Analysis result of CSB-EP018860HU could indicate that this peptide derived from E.coli-expressed Homo sapiens (Human) PSIP1.



Based on the SEQUEST from database of E.coli host and target protein, the LC-MS/MS Analysis result of CSB-EP018860HU could indicate that this peptide derived from E.coli-expressed Homo sapiens (Human) PSIP1.

Reconstitution

We recommend that this vial be briefly centrifuged prior to opening to bring the contents to the bottom. Please reconstitute protein in deionized sterile water to a concentration of 0.1-1.0 mg/mL. We recommend to add 5-50% of glycerol (final concentration) and aliquot for long-term storage at -20°C/-80°C. Our default final concentration of glycerol is 50%. Customers could use it as reference.

Shelf Life

The shelf life is related to many factors, storage state, buffer ingredients, storage temperature and the stability of the protein itself. Generally, the shelf life of liquid form is 6 months at -20°C/-80°C. The shelf life of lyophilized form is 12 months at -20°C/-80°C.