



# Recombinant Human Kynurenine--oxoglutarate transaminase 3 (CCBL2)

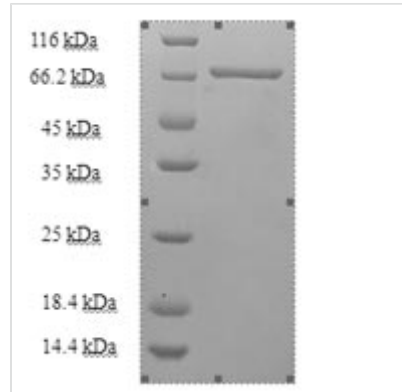
<b>Product Code</b>	CSB-EP740996HU
<b>Relevance</b>	Catalyzes the irreversible transamination of the L-tryptophan metabolite L-kynurenine to form kynurenic acid (KA). May catalyze the beta-elimination of S-conjugates and Se-conjugates of L-(seleno)cysteine, resulting in the cleavage of the C-S or C-Se bond . Has transaminase activity towards L-kynurenine, tryptophan, phenylalanine, serine, cysteine, methionine, histidine, glutamine and asparagine with glyoxylate as an amino group acceptor (in vitro). Has lower activity with 2-oxoglutarate as amino group acceptor (in vitro) .
<b>Abbreviation</b>	Recombinant Human CCBL protein
<b>Storage</b>	The shelf life is related to many factors, storage state, buffer ingredients, storage temperature and the stability of the protein itself. Generally, the shelf life of liquid form is 6 months at -20°C/-80°C. The shelf life of lyophilized form is 12 months at -20°C/-80°C.
<b>Uniprot No.</b>	Q6YP21
<b>Alias</b>	Cysteine-S-conjugate beta-lyase 2 (EC:4.4.1.13)Kynurenine aminotransferase III ;KATIIIKynurenine--glyoxylate transaminase (EC:2.6.1.63)Kynurenine--oxoglutarate transaminase III
<b>Product Type</b>	Recombinant Protein
<b>Immunogen Species</b>	Homo sapiens (Human)
<b>Purity</b>	Greater than 90% as determined by SDS-PAGE.
<b>Sequence</b>	MFLAQRSLCSLSGRAKFLKTISSSKILGFSTSAKMSLKFTNAKRIEGLDSNVWIE FTKLAADPSVVNLGQGFPDISPPTYVKEELSKIAAIDSLNQYTRGFGHPSLVKAL SYLYEKLYQKQIDSNKEILVTVGAYGSLFNTIQALIDEGDEVILIVPFYDCYEPMV RMAGATPVFIPLRSKPVYGKRWSSSDWTLDPQELESKFNSKTKAIIINTPHNPL GKVYNREELQVIADLCIKYDTLCISDEVYEWLVYSGNKHLKIATFPGMWERTITI GSAGKTFSVTGWKLGWSIGPNHLIKHLQTVQQNTIYTTCATPLQEALAQAFWIDI KRMDDPECYFNSLPKELEVKRDRMVRLLSVGLKPIVPDGGYFIIADVSLLDPD LSDMKNNEPYDYKFKVWMTKHKKLSAIPVSAFCNSETKSQFEKFRFCFIKKD STLDAEEIHKAWSVQKS
<b>Research Area</b>	Signal Transduction
<b>Source</b>	E.coli
<b>Target Names</b>	KYAT3
<b>Expression Region</b>	1-454aa
<b>Notes</b>	Repeated freezing and thawing is not recommended. Store working aliquots at 4°C for up to one week.
<b>Tag Info</b>	N-terminal 6xHis-SUMO-tagged



**Mol. Weight** 67.4kDa

**Protein Length** Full Length

**Image**



(Tris-Glycine gel) Discontinuous SDS-PAGE (reduced) with 5% enrichment gel and 15% separation gel.

**Reconstitution**

We recommend that this vial be briefly centrifuged prior to opening to bring the contents to the bottom. Please reconstitute protein in deionized sterile water to a concentration of 0.1-1.0 mg/mL. We recommend to add 5-50% of glycerol (final concentration) and aliquot for long-term storage at -20°C/-80°C. Our default final concentration of glycerol is 50%. Customers could use it as reference.

**Shelf Life**

The shelf life is related to many factors, storage state, buffer ingredients, storage temperature and the stability of the protein itself.

Generally, the shelf life of liquid form is 6 months at -20°C/-80°C. The shelf life of lyophilized form is 12 months at -20°C/-80°C.